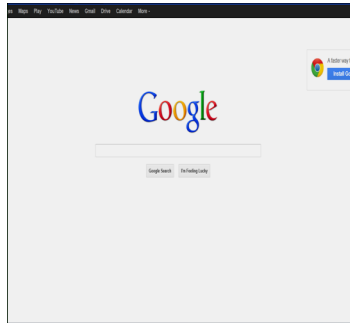




8. *This is the message you will receive if you have logged in successfully.*
9. *Type in the internet address (URL) to access the web page desired.*



10. *You are now connected to the internet*

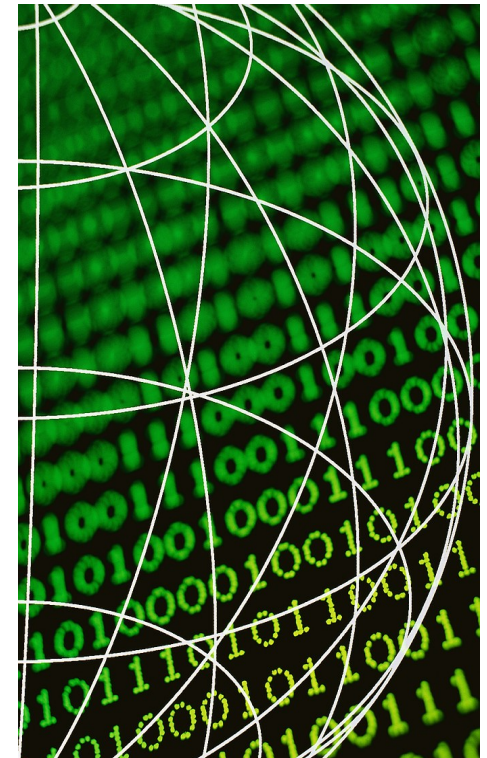
GUEST USERS

1. When accessing the CSU Wi-Fi as a “Guest User” your access is restricted to the www. Com (world wide web page) outside of CSU.
2. Guest users simply need to click on the “ACCEPT” button as noted in the screen below to gain access the internet using CSU Wi-Fi.



3. Please note when clicking on the “ACCEPT” button, you are accepting CSU terms and conditions outlined in our Security Policy at [http://www.csu.edu/is/ networkInfrastructure/ infoSecurityPolicies/index.htm](http://www.csu.edu/is/networkInfrastructure/infoSecurityPolicies/index.htm)

CSU Wireless Service Wi-Fi Instructions (Staff)



ITD Network Services

ITD HelpDesk 773-995-3963

Getting Started

You will need to have an Active Directory "username" and "password"

To Establish a Username and Password:

1. From your computer, press the Alt-Ctrl-Delete keys simultaneously.
2. Type in your email /Cougar Connect "username" in the field for USER-NAME.
3. Leave the field for PASSWORD blank
4. Press the enter key or click on the arrow.
5. The following screen will appear:



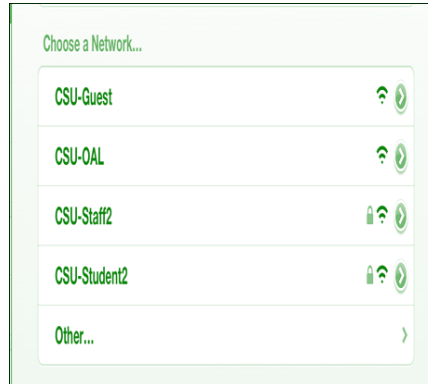
6. Leave the old "password" field blank.
7. Type in your new password in the "new password" field

NOTE: The new password must include:

 - i. Eight characters or more
 - ii. One lower case letter
 - iii. One upper case letter
 - iv. One special character
 - v. One numerical character
8. Type in your new password again to confirm
9. Press enter or click on the arrow.

Connecting to Wi-Fi

1. Select and Click on the wireless icon on your computer.
2. Select the "Wireless Network Connection," profile from the available list, i.e. – CSU-Student2, CSU-Staff2, CSU-Guest); then click "Connect."



3. You will be asked to enter the network security key. <step required during the initial logon only>



4. Enter the security key (SK) and click on OK. (Staff SK is f3ccb16151)
5. The following screen will pop-up requesting that for you to authenticate (you are authorized) to access the Wi-Fi and network.



6. Enter your Active Directory UserID and Password.
7. The screen below will display indicating that you have successfully logged into the CSU Wi-Fi system.

