

Upcoming Events

“Online Teaching
Excellence:
Pedagogy and
Andragogy (Part I)”
Begins

6/9
5 Weeks
Online via
Moodle

“Strengthen Your
Syllabus”
Workshop

6/12
10:30-11:30
LIB 301

“Strengthen Your
Syllabus”
Workshop

6/12
1:00-2:00
LIB 301

[Click here to register for an event.](#)

APPEALING APPS & SITES

Site: Academic Impressions

Cost: FREE!



Academic Impressions serves higher education professionals by providing programs that “focus on what can be done today and tomorrow to address higher education’s most pressing challenges.”

CTRE Grant Rubrics

The next application deadline for CTRE grants is fast approaching—**July 1, 2014**.

New to this application period will be the implementation of rubrics in the evaluation process. Each of the four grant applications will be reviewed according to its specific rubric, which can be downloaded on the CTRE website’s “[Grants](#)” page.

The grant review rubrics were approved for use by the faculty of the CTRE Advisory Board.

The rubrics will not alter the application process in any way; all paper-work and required supplemental

documents that need to be submitted will remain unchanged.

If you have any questions regarding the grant review rubrics, email ctre@csu.edu or call 773-995-2960.

CTRE Grant Application Review Rubric
Faculty Development Award – Program Rubric

Applicant Name: _____ Funds Requested: _____
Applicant Title: _____ Funds Approved: _____

NOTE: Incomplete applications will not be reviewed.

	10 Points	8 Points	6 Points	4 Points	0 Points
I. Impact	Has a high probability of making a strong, lasting impact on the scholarly life of students, the applicant, and the university in teaching, research, and service.	Has a high probability of making a strong impact on the scholarly life of students, the applicant, and the university in teaching and research.	Has a high probability of making some impact on the scholarly life of students, the applicant, and the university in teaching and research.	Has a high probability of making some impact on the scholarly life of students, the applicant, and the university in teaching or research.	Not evident
II. Objectives	Endeavor is strongly justified with well-articulated, measurable goals, objectives, and outcomes. A variety of meaningful competencies, skills, and sets of knowledge are engaged.	Endeavor is justified with measurable goals, objectives, and outcomes. A variety of competencies, skills, and sets of knowledge are engaged.	Endeavor is justified with measurable goals, objectives, and/or outcomes. A variety of competencies, skills, and/or sets of knowledge are engaged.	Endeavor is justified with measurable goals, objectives, and/or outcomes.	Not evident
III. Uniqueness	Endeavor capitalizes on opportunities, surroundings, teaching methods, student perspectives, and technology to create a unique, highly engaging learning opportunity.	Endeavor capitalizes on opportunities, surroundings, teaching methods, student perspectives, and technology to create a unique, engaging learning opportunity.	Endeavor capitalizes on opportunities, surroundings, teaching methods, student perspectives, and technology to create an engaging learning opportunity.	Endeavor capitalizes on opportunities, surroundings, teaching methods, student perspectives, and/or technology to create an engaging learning opportunity.	Not evident
IV. Collaboration	Endeavor involves the active collaboration of two or more programs, departments, colleges, or institutions, or the surrounding community.	Endeavor involves meaningful input from two or more programs, departments, colleges, or institutions, or the surrounding community, in its planning or general development.	Endeavor involves some input from two programs, departments, colleges, or institutions, or the surrounding community, in some aspect of its development.	Endeavor was developed solely by the applicant, and there is no plan to involve the collaboration of additional persons.	Not evident

CSU Leading the Way

On Thursday, June 5, Chicago State University hosted “Alzheimer’s Disease: Translating Research into Care,” a conference dedicated to looking at the current state of understanding and treating Alzheimer’s.

Chicago Public Radio station WBEZ contacted Dr. Sarah Austin, Assistant Professor of Occupational Therapy at Chicago State University. She and Beverly Kimmons of the Alzheimer’s Association were invited to comment on “The Morning Shift” with host Tony Sarabia regarding the



conference and Alzheimer’s research in general. You can listen to WBEZ’s interview via SoundCloud by [clicking here](#).

Congratulations to all the Chicago State University faculty involved in making last Thursday’s conference a success—as well as Dr. Austin’s students who presented!

Looking Forward

CTRE Virtual Roundtable

The CTRE's newest faculty development initiative, CTRE Virtual Roundtable, is offered as a convenient, user-friendly means of connecting with colleagues across campus to discuss issues and topics related to teaching.

Upcoming roundtables include:

"Discover Great Teaching Resource Websites"

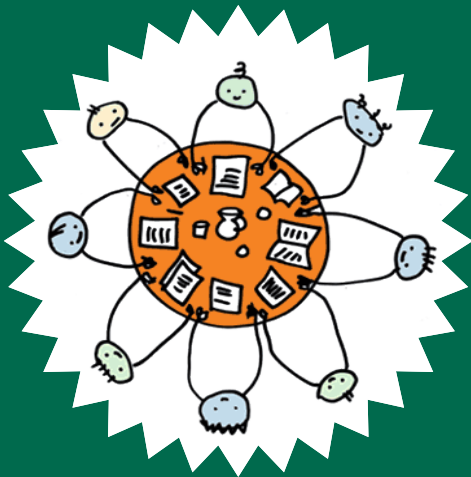
June 9, 2014
10:30-11:30

"Revising Your Syllabus"

June 16, 2014
10:30-11:30

"How Do I Make My Face-to-Face Course 'Web-Enhanced'?"

June 23, 2014
10:30-11:30



Each virtual roundtable will take place via Blackboard Collaborate. Links for each session can be found in the Instructors Resource Course in Moodle.

CTRE Faculty Symposium Series

As part of its 2014-2015 programming theme, the CTRE is pleased to announce :

CTRE Faculty Symposium Series

This series is an opportunity for faculty from across campus to share their scholarly work to an audience of their university peers and colleagues. All disciplines, topics and formats are welcome.

Symposia will take place throughout the academic year, starting in the summer of 2014.

If you are interested in being a presenter, please fill out [this brief information form](#). You will be contacted shortly thereafter.

If you have questions about the CTRE Faculty Symposium Series, please contact James Kowalski at jkowalsk@csu.edu or 773-995-2498.



SLATE Conference

SLATE, the world's largest online learning user's group, is announcing an open **call for papers** for its upcoming **12th Annual SLATE Conference**.

The conference will be held on **October 22-24, 2014** at **Northern Illinois University's** Naperville campus.

Recognizing that deployment issues, support concerns, teaching strategies, learning styles, best practices, etc., are common among the varied CMS/LMS clients, this conference invites everyone that is deploying and/or currently using any Web-based tools in their teaching and learning to attend. Last year, Chicago State University had the largest delegation among all institutions in attendance.

SLATE

For Moodle-using institutions like CSU, this conference will also feature a **Moodle Special Interest Group (SIG)** to discuss developments, creative uses, and issues specific to Moodle.

If you are interested in presenting at the SLATE Conference, the submission deadline is June 30, 2014.

If you have any questions [click here](#) for additional information.