

Upcoming Events

"Online Teaching
Excellence:
Pedagogy and
Andragogy (Part I)"
Begins

6/9
5 Weeks
Online via
Moodle

"Strengthen Your
Syllabus"
Workshop

6/12
10:30-11:30
LIB 301

"Strengthen Your
Syllabus"
Workshop

6/12
1:00-2:00
LIB 301

[Click here to register for an event.](#)

{ APPEALING APPS & SITES }

Site: [Google Classroom](#)

Cost: FREE!



Google Apps
for Education has unveiled a new
tool called Google Classroom,
which "weaves together Google
Docs, Drive, and Gmail to help
teachers create and organize as-
signments quickly, provide feed-
back efficiently, and communicate
with students with ease."

Images: [Knowledge](#) [Google logo](#)

Summer Faculty Development Opportunity

Are you looking for professional
development opportunities over
the summer that won't require
you to be on campus? Consider
enrolling in the CTRE's newest
online course, Online Teaching
Excellence: Pedagogy and Andra-
gogy (OTE).

In order to accommodate as wide
an audience as possible, OTE has
been restructured from its pilot
version into a sequence of two
mini-courses. Each mini-course
is approximately five weeks in
length and takes place entirely
online.

Course Descriptions

OTE: Pedagogy and Andragogy I (Begins June 9, 2014)

This course explores a handful of es-
sential education theory concepts:
pedagogy, andragogy, learning styles,
and Bloom's Taxonomy. Through
self-guided and cooperative learning
activities, participants build on their
current teaching strengths, and are
given opportunities to hone new
ones. Those who take this course
will enhance their ability to create
rich, meaningful learning activities
that engage their students in any ed-
ucational setting, be it face-to-face,
online, or hybrid.

Prerequisites: Basic computer skills

OTE: Pedagogy and Andragogy II (Begins July 21, 2014)



This course takes the concepts from
part I and applies them specifically to
the online classroom. It is ideal for the
online instructor who is already com-
fortable with the more commonly used
activities in Moodle, but would like to
use them in ways that are more firmly
based in education theory. Partici-
pants are also encouraged to explore
some of the less commonly used Moo-
dle activities.

*NOTE: In order to fully participate in
this course, registrants must have access
to a complete online course that they
themselves have built.*

Prerequisites: OTE: Pedagogy and An-
dragogy I; Online Certification Train-
ing (OCT)

[Click here to register.](#)

If you have any questions, please call
773-995-2498 or email [jkow-
alsk@csu.edu](mailto:jkow-
alsk@csu.edu).

Looking Forward

CTRE Virtual Roundtable

The CTRE's newest faculty development initiative, CTRE Virtual Roundtable, is offered as a convenient, user-friendly means of connecting with colleagues across campus to discuss issues and topics related to teaching.

Upcoming roundtables include:

"Discover Great Teaching Resource Websites"

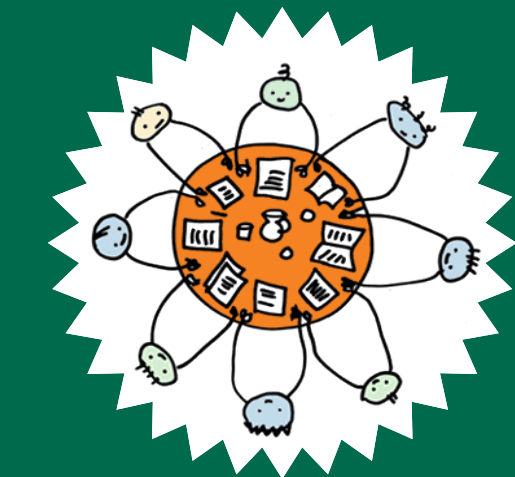
June 9, 2014
10:30-11:30

"Revising Your Syllabus"

June 16, 2014
10:30-11:30

"How Do I Make My Face-to-Face Course 'Web-Enhanced'?"

June 23, 2014
10:30-11:30



Each virtual roundtable will take place via Blackboard Collaborate. Links for each session can be found in the Instructors Resource Course in Moodle.

CTRE Grant Applications Due 7/1

If you are planning to submit a CTRE Grant application for the July 1 deadline but will be off-campus during the summer, be sure to complete all the necessary paperwork before you go!

You can find information and downloadable application forms on the [CTRE website's grants page](#).



CTRE Faculty Symposium Series

As part of its 2014-2015 programming theme, the CTRE is pleased to announce :

CTRE Faculty Symposium Series

This series is an opportunity for faculty from across campus to share their scholarly work to an audience of their university peers and colleagues. All disciplines, topics and formats are welcome.

Symposia will take place throughout the academic year, starting in the summer of 2014.

If you are interested in being a presenter, please fill out [this brief information form](#). You will be contacted shortly thereafter.

If you have questions about the CTRE Faculty Symposium Series, please contact James Kowalski at jkowalsk@csu.edu or 773-995-2498.



SLATE Conference

SLATE is announcing an open [Call for Papers](#) for the 12th Annual SLATE Conference, being held on **October 22-24, 2014** and hosted at NIU's Naperville campus.

The SLATE/Moodle special interest group (SIG) was well represented last year and hopefully there will be an even greater attendance this year. So submit your session papers today to fill out the track. **Submission deadline: June 30, 2014.**

SLATE