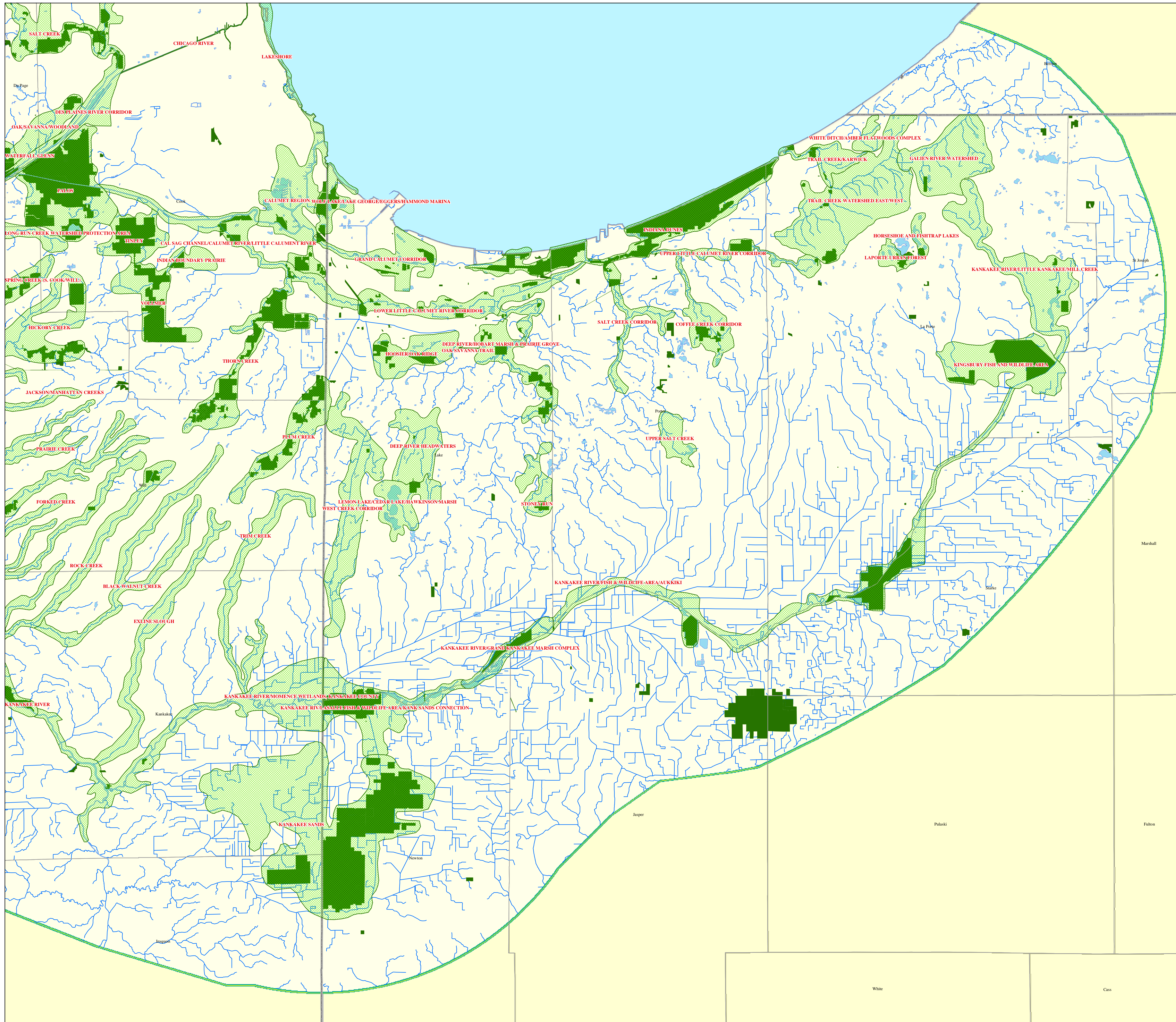
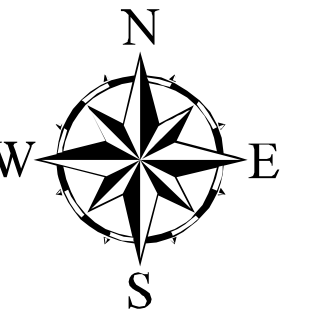


Chicago Wilderness Green Infrastructure Vision Northwestern Indiana



	Recommended Resource Protection Areas
	Existing Public Open Space
	County Boundaries
	State Boundaries
	Streams and Rivers
	Lake Michigan
	Open Water

DATA SOURCES:

Existing Public Open Space in Indiana: Nature Preserves from Indiana Department of Natural Resources' Nature Preserves digitized from 1:24,000 quad maps; Managed Areas from Indiana Department of Natural Resources' Draft GAP Analysis and from U.S. Environmental Protection Agency, Region 5, Great Lakes Commission's 1998-2001 Northern Indiana Inland Sensitivity Atlas, Managed Areas Coverage, Northern Indiana Mapping Area, Final, Version 1, August 2001.

Existing Public Open Space in Illinois: Cook County Forest Preserves from Forest Preserve District of Cook County's Forest Preserve District Boundaries, April 2001; DuPage County Forest Preserves from Forest Preserve District of DuPage County's 2003 Forest Preserve District Boundaries, February 2003; Lake County Forest Preserves from Lake County Forest Preserve District, 2003; McHenry County Forest Preserves from McHenry County Conservation District, digitized by NIPC staff from McHenry County Highway Map, September 2002; Kane County Forest Preserves from Kane County Forest Preserve District Boundaries, May 2002; Will County Forest Preserves from Forest Preserve District of Will County's 2003 PINS, 2003/1/20, November 2003; Midwestern National Tallgrass Prairie from Midwestern Prairie Explorer 1999 CD-ROM with additional edits reflecting changes between CD release date and April 2001; Illinois State Parks and Illinois State Conservation Areas from Illinois Department of Natural Resources, Illinois Geographic Information System CD-ROM, Volume II, May 1996.

County Boundaries, State Boundaries and Lake Michigan: ESRI's 2000 Data & Maps Media Kit CD-ROM, CD3, 2001.

Streams and Open Water: U.S. Geological Survey's National Hydrography Dataset.

