

# the CAPSULE

A newsletter for Chicago State University College of Pharmacy alumni and friends



CSU Student ASCP chapter at Chicago's 2012 Alzheimer's Association Walk to End Alzheimer's®

## Student Pharmacists Receive Campus-wide Honors

CSU pharmacy students gained campus-wide recognition when the student chapter of the American Society of Consultant Pharmacists (ASCP) received the university's Community Builders Award.

The CSU Student Government Association presented the award in May, in recognition of the pharmacy group's strong commitment to community service. During the 2012-13 academic year, the ASCP Chapter secured gift baskets for the Mercy Health Center Christmas Food

Basket Drive; made an informational presentation to Chicago-area geriatric pharmacy leaders; raised funds and participated in Chicago's Alzheimer Association Memory Walk; and sponsored a campus-wide "Release the Stress" bowling party.

The ASCP Chapter was honored, along with other student organizations that made positive impacts on the CSU campus and community, during the 2012-13 school year.

# DEAN'S CORNER

**A**cademic year 2013-14 continues to be an exciting time for the CSU College of Pharmacy, as you'll read in this edition of *The Capsule*.

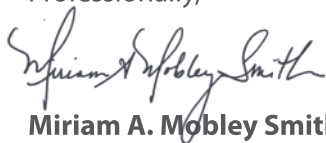
With the Class of 2013 alumni representing us well in the profession, our new status from ACPE as a continuing education provider, and increasing recognition for our pharmacy students engaged in research and service endeavors, the future could not be brighter for the college.

We are also preparing to host the District IV meeting for the National Association of Boards of Pharmacy and American Association of Colleges of Pharmacy, and securing new research grant approvals. So continue to watch our growth!

It saddens me that our colleague and friend, Dr. Beverly Talluto, who lost her brave fight against breast cancer in July, is not here with us to celebrate these accomplishments. She will be missed. An upcoming, special edition of *The Capsule* will be dedicated to her and her many contributions to the college as well as the profession.

As you read this newsletter, please join me in congratulating the entire college community on providing leadership and sustained contributions — through the important work of discovery, teaching, learning and providing care — that are shaping the future of tomorrow's healthcare every day.

Professionally,



**Miriam A. Mobley Smith, PharmD, FASHP**  
Dean, Chicago State University College of Pharmacy

# the CAPSULE

A newsletter for CSU-COP alumni and friends.

Fall 2013      Volume 2, No. 1

## Publisher

**Miriam A. Mobley Smith, Pharm D, FASHP**  
Dean, Chicago State University College of Pharmacy

## Editor-in-Chief

**Louis Wright**  
Executive Director of Development

## Managing Editor

**Cassie Richardson**

## Contributing

**Melany P. Puglisi-Weening, Cassie Richardson, Jozef Stec, and Louis Wright,**

## CSU-COP Marketing Communications Committee

**Sultan Farabee**  
Recruitment Coordinator

**Don Brower, BS Pharm**  
Advanced Pharmacy Practice Experience Coordinator

**Amalia Diaz**  
Student Affairs Program Advisor

**Jozef Stec, PhD**  
Assistant Professor of Pharmaceutical Sciences

**Michael Danquah, MS, PhD**  
Assistant Professor of Pharmaceutical Sciences

**Marketa Marvanova, PharmD, PhD**  
Clinical Associate Professor of Pharmacy Practice

**Keela Drummond Finley**  
Office Administrator for Pharmaceutical Sciences

**Kristopher Leja, PharmD '13**  
receives the Dean's Award for Exemplary Advocacy and Leadership by Dean Miriam A. Mobley Smith, PharmD, FASHP



# Contents

<b>Giving Report</b>	4
CVS Caremark Gift Funds New Student Learning Center	
Cardinal Health's Generosity Supports CSU-COP	
<b>Student Pharmacist Speaks on National Panel</b>	5
<b>PharmD Candidates Shine at Capstone Research Day</b>	6
<b>Student Profile</b>	7
Campus Liaison Helps Students Gain Target® Careers	
<b>Student Research Trip Adds New Perspectives in Pharmacy</b>	8
<b>Pharmacists Oath and Hooding Ceremony</b>	10
<b>Faculty Achievements</b>	12
<b>Alzheimer's Update</b>	14
<b>Student Achievement</b>	
<b>Rx Insights: Practical applications for CSU-COP research</b>	15
Bell Peppers Can Add Spice to Our Lives	

*The Capsule* is published quarterly by Chicago State University College of Pharmacy Marketing and Communication Committee using state funds.

**Chicago State University  
College of Pharmacy**

Douglas Hall  
9501 S. King Drive | 206 Douglas Hall  
Chicago, Illinois 60628  
(773) 995-2000

© 2013. All rights reserved

Sharon Joseph, PharmD '13 Heather Fields, PharmD, clinical associate professor, Inayath Khan, PharmD '13, and Stavroula Houmpavlis, PharmD '13 at the college's 2013 Capstone Research Day.



**March 12:** **Top left:** Student pharmacists at the CVS Caremark Reception. **Top right:** CVS Caremark Vice President of Pharmacy Affairs Papatya Tankut addresses guests at the CVS Caremark Reception. **Bottom:** CSU College of Pharmacy Dean Miriam A. Mobley Smith, PharmD, FASHP speaks to guests at the CVS Caremark Reception

# CVS Caremark Gift Funds *New Student Learning Center*

CSU College of Pharmacy students will soon have a pristine, modern learning lounge outfitted with up-to-date meeting presentation and teleconferencing equipment, thanks to a \$250,000 donation provided by CVS Caremark. This space will facilitate student collaboration and group problem-solving activities. "To say thank you is an understatement," said College of Pharmacy Dean Miriam Mobley Smith, PharmD, FASHP. "This donation will help to improve the college's physical space and technological

resources FASHP which greatly enhance student success within the College of Pharmacy."

Early on, CSU student pharmacists are expected to learn how to work collectively in team settings — a requirement based on the latest healthcare trends, which continue to move toward more multidisciplinary patient care models.

Small group communities prepare students by facilitating student collaboration and increasing faculty engagement, which fosters a high degree of scholarly productivity.

## Cardinal Health Scholarship Promotes Diversity, Entrepreneurship

**July 23:** Cardinal Health invested \$125,000 in the College of Pharmacy to promote diversity, both in health care education and small business ownership. This donation will fund scholarships for pharmacy students interested in independent pharmacy ownership.

This joint effort is designed to expose student pharmacists to the value of independent pharmacy ownership in urban and rural communities. It will also teach CSU student pharmacists how to implement strategies that can help ensure these small businesses are competitive in the modern marketplace.

This grant marks Cardinal Health's first financial gift to the college. Since its inception, CSU-COP has earned distinction as one of the most diverse colleges of pharmacy in the United States. Nearly 40 percent



of CSU student pharmacists belong to groups that are considered underrepresented minorities in health care.

"Cardinal Health's investment toward our students' success speaks volumes about their commitment to ensuring we develop talented health professionals to address the healthcare needs and challenges of all individuals," said Dean Miriam A. Mobley Smith, PharmD, FASHP. "I am truly excited about this new investment, and I am looking forward to working closer with

Cardinal Health over the next few years and beyond."

The newly-funded scholarships will be earmarked for students with expressed interest and/or commitment to independent pharmacy ownership as a career. The college expects to award the first Cardinal Health-funded scholarships during the 2013-14 academic year.



## Student Pharmacist Speaks on National Panel

**November 2012:** Fourth-year student pharmacist **Tiffany Brown** attended the 13th Annual Biomedical Research Conference for Minority Students (ABRCMS) in San Jose, Calif., as an invited guest panelist.

Brown participated in the graduate student panel, titled "My Path to Success," which included students pursuing PharmD, PhD and MD/PhD degrees. During the panel, she spoke about her educational background in chemistry and offered insights for applying and getting accepted into a pharmacy program. Brown also discussed her experience as a CSU pharmacy student and answered questions about the profession and careers in the pharmacy industry.

ABRCMS is the largest professional conference for minority students pursuing advanced training in science, technology, engineering and mathematics (STEM). This conference attracts approximately 3,300 individuals, including 1,700 undergraduates, 400 graduate students and postdoctoral scientists, and 1,200 professors, program directors and administrators representing colleges and universities from across the country.

## Faculty News

### Promotions



**Abir El Alfy, PhD**, was promoted from assistant professor to associate professor of pharmaceutical sciences.



**Melany Puglisi-Weening, PhD**, was promoted from assistant professor to associate professor of pharmaceutical sciences.



**Rebecca Castner, PharmD**, assistant professor of pharmacy practice, received "The Pharmacist and Patient-Centered Diabetes Care" certification from the American Pharmacists Association.



**Marketa Marvanova, PharmD, PhD**, associate professor of pharmacy practice received "The Pharmacists and Patient-Centered Diabetes Care" certification from the American Pharmacists Association.

### Board Certifications



**Marketa Marvanova, PharmD, PhD**, was certified by the Commission of Certification in Geriatric Pharmacy as a geriatric pharmacy specialist.



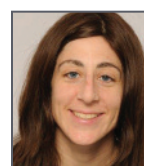
**Janene Marshall, PharmD**, assistant professor of pharmacy practice, was officially recognized by the Board of Pharmacy Specialties as a board certified pharmacotherapy specialist.

### Certifications



**Cindy Arcena, PharmD**, assistant professor of pharmacy practice, received "The Pharmacist and Patient-Centered Diabetes Care" certification from the American Pharmacists Association.

### Leadership Appointments



**Diana Isaacs, PharmD**, clinical assistant professor of pharmacy practice, was named chair-elect of the Illinois Counsel of Health-System Pharmacists' New Practitioner Network. Dr. Isaacs was also appointed to the American Society of Health-System Pharmacists' Membership and Outreach Advisory Group.



**Janene Marshall, PharmD**, assistant professor of pharmacy practice, was appointed to the National Pharmacists Association's board of directors.

## Attention CSU-COP Alumni Send Us Your News!

*The Capsule* wants to help you stay in touch with your classmates, former instructors and the CSU family. Tell us about your recent career and professional achievements. Update us on your major personal milestones, including marriages, births and civic accomplishments. We'll be sure to publish your good news in a new Class Notes announcement section, which will soon become a regular feature of this newsletter.

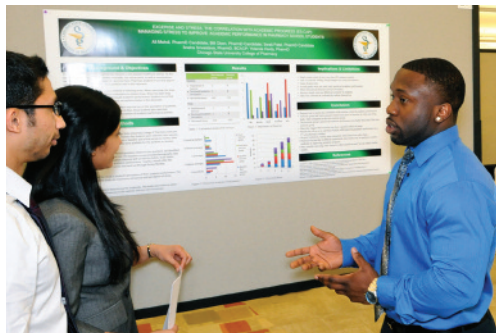


To submit your good news, email **Louis Wright**, executive director of development, at [lwright27@csu.edu](mailto:lwright27@csu.edu).

# PharmD Candidates Shine at Capstone Research Day

Dean Miriam A. Mobley Smith, PharmD, FASHP joined COP faculty members, health sciences researchers from other areas of the CSU campus and student pharmacists at the college's annual scholarly exchange, which took place in the Chicago State University New Academic Library.

Participation in this event, administered by the Department of Academic Affairs, satisfies a major component of PharmD candidates' formal research requirement at CSU-COP.



**May 3:** Fourth-year student pharmacists presented the findings of their year-long research projects at the College of Pharmacy's second annual Capstone Research Day.

## Congratulations to the following student pharmacists who received Best Capstone Poster awards:

	CATEGORY	PROJECT TITLE
Vaidehi Thakkar and Jadwiga Zawada	Pharmaceutical Sciences	"Preliminary Phytochemical Investigation of <i>Cochlospermum angolense</i> Bark"
Stacey Dust, Diana Hegazin and Kelsey Pieper	Pharmacy Practice	"Pharmacist-led Phone Calls after Hospital Discharge and Acute Decompensated Heart Failure Readmissions"
Riddhi Parikh and Chandni Patel	Pharmacy Practice	"Comparison of Traditional Point of Care Testing in an Anticoagulation Clinic versus Home Self-testing"
Blaine Gooch and Nicole Serafin	Pharmacy Education	"Capstone Research Projects & Beyond: Perceptions of Fourth Year Professional Students on Pharmacy Job Attainment"
Ankit Patel and James Rodriguez	Public Health	"The Pharmacist as a Public Resource"

CHICAGO  
STATE  
UNIVERSITY

College of Pharmacy

Preparing pharmacists  
for the global community.

Make your online gift to the college today.  
Visit [www.csu.edu/foundation/](http://www.csu.edu/foundation/)





*“My biggest role as far as being a campus liaison is getting Chicago State students into the workforce.”*

*– Kash Usman, CSU student pharmacist*

## STUDENT PROFILE:

# Campus Liaison Helps Students Gain Target® Careers

When he's not studying or working as a pharmacy intern on Chicago's South Side, Kash Usman is busy recruiting Illinois' best future pharmacists to join him in beginning a bright career at Target.

Usman, now a fourth-year student pharmacist, works as a Campus Liaison for Target Pharmacies. In this role, he partners with company recruiters to network with student pharmacists across the state, share available employment opportunities and discuss the benefits of working at Target.

His duties carry him to every pharmacy college campus in Illinois. But Usman is quick to admit that he is especially focused on recruiting future pharmacists from Chicago State University College of Pharmacy.

“My biggest role as far as being a campus liaison is getting Chicago State students into the workforce,” he said.

To help bring CSU students to the top of the recruiting lists, Usman stays abreast of Target job openings nationwide and alerts his fellow students as early as possible. He also helps them rise to the top of interview lists by collecting resumes from interested candidates and forwarding them directly to the recruiter filling each vacancy. Since taking the position of campus liaison in August 2012, Usman has helped place several CSU-educated pharmacy professionals at Target.

CSU pharmacy students are highly prepared for employment opportunities at Target because “1) have an extensive curriculum and 2) from the first year that we're in pharmacy school, we're put out there” interacting with patients, Usman said.

Many pharmacy education programs allow students to interact with patients after they have completed the first year of professional studies.

“The experience factor plays a huge role in employment

opportunities. We have a little edge. We're already comfortable talking to patients and physicians,” by the end of the first professional year, he said.

Usman's professional relationship with Target began in 2008. During his first year in pharmacy school — as part of his *Introduction to Pharmacy* practical experience course — he worked one day a week, for 12 weeks, in Target's in-store pharmacy located at the corner of 87th Street and Cottage Grove Avenue. Before that rotation ended, Usman knew he had landed at the company where he belongs.

“My first pharmacy manager was Julie Strong. She had excellent communication with her patients. A lot of them knew her by her first name.”

In fact, patients shared their personal issues beyond their health concerns. And, if Strong was not on duty, many of them would postpone their business and return to the pharmacy on another day when she was available.

“Just her communication skills and her caring for every patient touched me... That's what actually attracted me to Target,” the student pharmacist said.

Usman asked to stay on and continue working in the pharmacy when his introductory rotation ended.

Today, he is a pharmacy intern at that same store, in addition to his campus liaison role. After graduation, Usman plans to return to his hometown, Dallas, Tex., with a job as a full-time Target pharmacist. At that point, he expects his fast-track journey toward company leadership will begin.

“I got an opportunity and from there it's been great. I haven't wanted to leave. I'm very happy with Target,” he said, adding that if given the opportunity, he's sure other CSU students will feel the same way, too.



**July 2013: Back row:** Michael Bradaric, PhD, assistant professor, Kaitlyn Ferguson student pharmacist, Melany Puglisi-Weening, PhD, associate professor, Julia Sears, student pharmacist. **Middle row:** Taylor Higland, student pharmacist, Damiete Whyte, student pharmacist. **Front row:** Jaclyn Sievers, student pharmacist, Albert Nelson, student pharmacist

# Student Research Trip Adds New Perspectives in Pharmacy

by **Melany P. Puglisi-Weening, PhD**

**T**he idea of spending two weeks snorkeling in the warm waters of the Florida Keys may seem like a dream vacation to many college co-eds.

But for six CSU student pharmacists who accompanied me on a field research expedition to the Keys Marine Laboratory in Long Key, Fla., two weeks working in the sunshine state amounted to an unforgettable learning experience.

For the past two years, I've organized this experiential research excursion to open students' eyes to the breadth of pharmaceutical research and new applications of their pharmacy education. Based on the participating student pharmacists' responses, this undertaking is well worth the effort.

In July 2012, student pharmacists Heta Mewada, Albert Nelson, Jean Bertrand Nkwayep, Elizabeth Philip, and Jaclyn Sievers spent the better part of two weeks in the Florida Bay and Atlantic Ocean snorkeling to collect 25 species of marine algae and 18 species of sponges. The students learned how to identify the algae in the water, then properly collect, sort, label, and store the samples.

This past summer Nelson and Sievers – now in their fourth year of studies — returned with second and third-year students Julia Sear, Kaitlyn Ferguson, Damiete Whyte, and Taylor Highland. During the

2013 trip, the students collected samples from the feeding sources of fish and hermit crabs, in addition to collecting large samples of algae for chemical studies.

## **“An Amazing Experience”**

“The research trips to the Florida Keys were not only educational and fun; they were amazing experiences that opened my eyes to other avenues of pharmacy,” Sievers explained.

To supplement their field collection experiences, the CSU student pharmacists had opportunities to interact with the laboratory's staff and other research groups visiting the station. They also learned about the ecology and distribution of marine organisms in the Florida Keys, and heard about the research laboratory's ongoing initiatives to preserve the environment.

The highlight of each year's trip was putting the students' new knowledge to work by conducting laboratory research experiments during their stay.

## **Students Leading Research**

For example, in 2012, Sievers — assisted by Mewada, Nkwayep and Philip — set up a 10-day experiment to determine if the calcified green alga, *Penicillus dumetosus*, would increase production of



antifungal compounds after exposure to environmental fungus.

This year, Sievers continues her research on the CSU campus, where she plans to use analytical high-performance liquid chromatography to determine the concentration of the antifungal compounds isolated in the laboratory by Mewada.

In another 2012 experiment, Mewada investigated the antifungal properties of the purple shallow water sponge, *Chalinula molitba*. With assistance from Nelson, Mewada measured the presence of marine fungi and bacteria in sponge extract samples. She found that this sponge inhibits the growth of two out of 30 environmental bacterial strains — a lesson that gave the students new insights into the initial discovery phase behind many of the antibacterial household products on the market today.

"This was my first research field trip to the Florida Keys. I didn't know what to expect but as the week went on I learned many different things," Mewada said.

In 2013, Highland and Ferguson collected pinfish (*Lagodon rhomboides*) and hermit crabs, common herbivores in the sea grass beds of the Florida Bay. The students then studied the effects certain marine algae and sponges have on the normal feeding patterns of the collected specimen. I'm looking forward to seeing these students make a return trip in 2014 to continue their initial investigations.

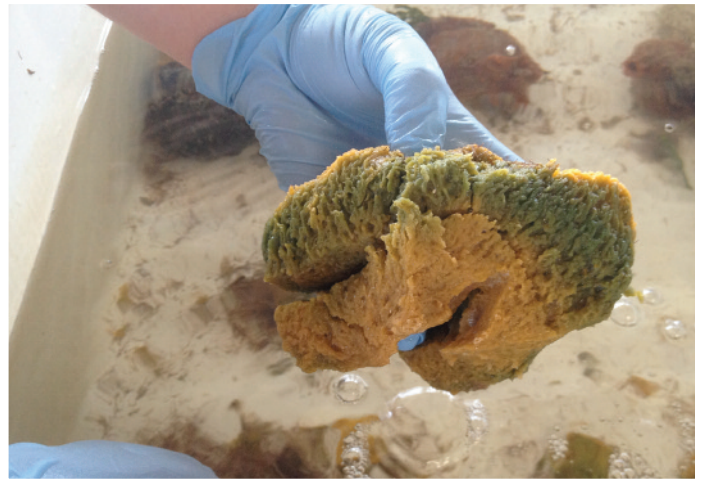
## Bringing CSU Studies to Life

According to Nelson, who travelled with me in 2012 and 2013, our "trip to the Florida Keys was an exciting experience that allowed me to see the natural environment of the algae I am working on in the lab."

Nelson started working on a student research project before his first trip. And in Florida, he gained insight that only hands-on experience can provide.

With assistance from Phillip and Sears, Nelson used different techniques to isolate more than 50 strains of marine bacteria associated with the surface of marine algae. His 2013 results show that the 24 algae extracts inhibit the growth of at least one of the associated bacteria. In addition, some extracts promote growth of several strains.

"Along with further increasing my understanding of the project I'm working on [at CSU], this experience introduced me to field work and different opportunities that pharmacy has to offer."



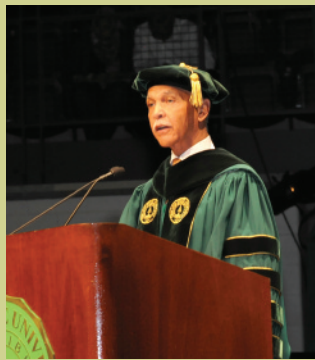
July 2013 : Student pharmacists Albert Nelson and Jaclyn Sievers.



**Melany Puglisi-Weening, PhD**, is an associate professor of pharmaceutical sciences. She serves as research mentor to 12 CSU students. "Overall," she says, "this was a very productive research trip that will lead to a number of Capstone and summer research projects for the students who participated last summer, and for those who will join the research effort in future years."

# Graduation Activities 2013

On May 15 the Chicago State University and the College of Pharmacy conferred a total of 81 PharmD degrees to its second graduating class, the CSU Pharmacy Class of 2013.

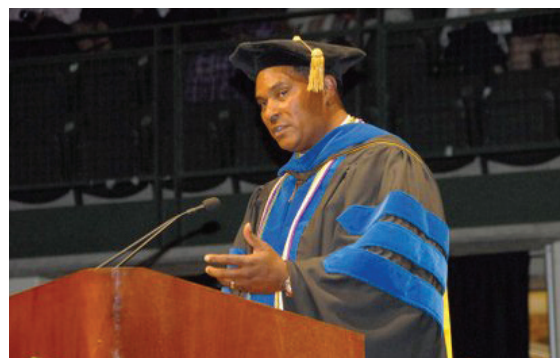


## Pharmacists Oath and Hooding Ceremony

As part of a pre-commencement College of Pharmacy tradition, the Class of 2013 recited the pharmacist's oath and received academic hoods representing achievement of the doctor of pharmacy degree, during an afternoon ceremony at the university's Emil and Patricia Jones Convocation Center.

American Association of Colleges of Pharmacy 2014-2015 President-Elect Lawrence, "LB" M. Brown, PharmD, PhD, FAPhA, delivered the keynote address.

Dr. Brown, who recently completed a term on the American Pharmacists Association Board of Trustees, currently serves as an associate dean of student and academic affairs and professor of pharmacoconomics and health policy at the Chapman University School of Pharmacy.



# Congratulations to the CSU Pharmacy Class of 2013 Graduates!

Omolara Akintilo  
Kimberlyn Ariwodo  
Saad Awan  
Hajra Baloch  
Franklin Betah  
Ryan Bougher  
Jeffrey Bowman  
Akshar Brahmatt  
Tiffany Brown  
Rohit Burde  
Rainier Celi  
Whitney Cheng  
Inderpreet Dhillon  
Michelle Dudek  
Stacey Dust  
Wenceslas Fanouth-Nguessan  
Dereje Gameda  
Theresa Geraghty  
Blaine Gooch  
Latasha Guy  
Diana Hegazin

Chenelle Heren  
Timmy-Tai Ho  
Stella Houmpavlis  
Chelsey Imel  
Melissa Jackson  
Ryan Johnson  
Sharon Joseph  
Jihee Kang  
Alexander Keppel  
Inayath Khan  
Jennifer Kim  
Elizabeth Lee  
Kristopher Leja  
Heather Li  
Zura Liaqat  
Liyun Lin  
Patrycja Lomozik  
Tatiana Mauda  
Ali Mehdi  
Kalkidan Melaku  
Samuel Mends

Mahdieh Monfared  
Elvis Nathan  
Daniel Nyakundi  
Bill Oben  
Magdalena Oberschlake  
Irwin Obispo  
Tochi Ohale  
Vivian Osuji  
Ihuoma Ozoh  
Riddhi Parikh  
Ankit Patel  
Chandni Patel  
Swati Patel  
Sweta Patel  
Kelsey Pieper  
Aisha Rauf  
Kelly Reder  
Loren Reid  
James Rodriguez  
Alicia Ross

Rahmath Safvi  
Jacob Salaysay  
Nicole Serafin  
Aarati Shah  
Olayide Shodunke  
Maju Simon  
Nahed Sobhy  
Vaidehi Thakkar  
Maribel Thiebaud  
Tramy Ton  
Logan Vela  
Nicholas Venvertloh  
Haroon Vohra  
Anthony Vu  
James Walker  
Gabrielle Wells  
Mikendra Wilburn  
Jadwiga Zawada  
Chelsea Zhang

## 2013 Mortar and Pestle Awards

Immediately following the 2013 Pharmacist's Oath and Hooding Ceremony, the college hosted its Mortar and Pestle Awards Luncheon at the CSU Academic Library. This end-of-year tradition honored the outstanding achievements of student pharmacists. Award recipients were selected based on criteria developed by the faculty and administrators of the college.

### Congratulations to the following award recipients!

**Facts & Comparisons®/Lexicomp®  
Award of Excellence in Clinical  
Communication**  
Maggie Oberschlake

**IPhA Foundation Leadership Award**  
Billy Oben

**Lilly Achievement Award**  
Vaidehi Thakkar

**Mylan Excellence in Pharmacy Award**  
Blaine Gooch

**National Standard Research Collaboration  
Academic Achievement Award**  
Chelsea Imel

**Natural Medicines Comprehensive  
Database Graduation Award**  
Vaidehi Thakkar and Jadwiga Zawada

**Teva Pharmaceuticals  
Outstanding Student Award**  
Kelsey Pieper

**The United States Public Health  
Service Excellence in Public Health  
Pharmacy Practice Award**  
Kimberlyn Ariwodo

**Dean's Award for Exemplary  
Advocacy and Leadership**  
Kristopher Leja

**Dean's Award for Exemplary  
Engagement and Service**  
Kimberlyn Ariwodo

**Excellence in Biomedical Sciences**  
Tatiana Backiev

**Excellence in Clinical Practice**  
Latasha Guy

**Excellence in Medicinal Chemistry**  
Wenceslas Fanouth-Nguessan

**Excellence in Pharmaceutics**  
Whitney Cheng Benefits

**Excellence in Pharmacology**  
Michelle Dudek

**Excellence in Social  
and Administrative Sciences**  
Kelsey Pieper

**Excellence in Student Leadership**  
Elizabeth Lee

## FACULTY ACHIEVEMENTS

# Lectures, Presentations and Panel Discussions

## August 2012 – June 2013

In October 2012, **Ehab Abourashed, PhD**, associate professor of pharmaceutical sciences, presented a research poster, titled *Utilization of Microbial Transformation to Enhance the Free-Radical Scavenging Activity of Silybin*, at the American Association of Pharmaceutical Scientists Annual Meeting and Exposition in Chicago. He was also invited by the Associated Colleges of the Chicago Area to present a lecture, titled *Biocatalytic Bugs: Microbial Transformation in Drug Discovery Development*, at Dominican University in November 2012.

**Cindy Arocena, PharmD**, assistant professor of pharmacy practice, presented the poster titled *Effect of Patient Self-Testing on Chronic Anticoagulation*, during the 2012 ACCP Annual Meeting in Hollywood, Fla.

In November 2012, **Abir El-Alfy, PhD**, associate professor of pharmaceutical sciences, presented a lecture, titled *Application of Microarray Technique in Understanding the Neurotoxicity of Acrylamide in Juvenile Animal Models*, as an invited plenary speaker at the first International Conference on Advanced and Basic Applied Sciences in Hurghada, Egypt.

In August 2012, **Dr. El-Alfy** delivered a lecture, titled *Nature Against Depression, Anxiety, and Opioid Withdrawal*, as an invited speaker at the 244th American Chemical Society's National Meeting and Exposition in Philadelphia.

In July 2012, **Marketa Marvanova, PharmD, PhD**, associate professor of pharmacy practice, presented a continuing education presentation, titled *Antipsychotic Use in Older Adults*, during the 24th Annual Midwest Regional American Society of Consulting Pharmacies Conference in Chicago.

**Janene Marshall, PharmD**, assistant professor of pharmacy practice, delivered a July 2012 Continuing Education presentation, titled *Who Runs the World? Girls! Updates on Hormonal Contraceptives*, at the National Pharmaceutical Association's annual meeting in Las Vegas.

**Tatjana Petrova, PhD**, assistant professor of pharmacy practice, delivered a one-hour seminar, titled *Motivational Interviewing: Use in Health Care and Evaluation of Health Care Trainees*, at the University of Connecticut School of Pharmacy's Department of Pharmacy Practice, in November 2012.

In January 2013, **Anna Ratka, PhD, PharmD**, department chair and professor of pharmaceutical sciences, delivered an elective pain management workshop to pharmacy students at Poznan University of Medical Sciences (PUMS) in Poznan, Poland. This four-day workshop included presentations and pain case studies. Dr. Ratka's visit was sponsored by the Center of Medical Education in English. She has been asked to instruct the PUMS pharmacy students again in spring 2014.

## Faculty Publications

**El-Alfy AT, Abourashed EA, Matsumoto RR.** "Nature Against Depression" *Current Medicinal Chemistry*, 19, no. 14 (2012): 2229-41.  
**El-Alfy AT**, review of Reproductive and Developmental Toxicology, by Gupta RG. *American Journal of Pharmaceutical Education*, 77, no.1 (2013): Article 20.

**El-Alfy AT**, review of Medical Toxicology of Natural Substances, Fungi, Medicinal Herbs, Plants, and Venomous Animals, by D.G. Barceloux. *Journal of Natural Products*, 74 (2011): 2027.

**Esterly JS, Darin KM, Gerzenshtein L, Othman F, Postelnick MJ, Scarsi KK.** "Clinical Implications of Antiretroviral Drug Interactions With Warfarin: a Case-Control Study," *Journal of Antimicrobial Chemotherapy*, 56, no. 9 (2012):4885-90.

**Esterly JS, Gilley J, Griffith M, Postelnick M, Qi C, Scheetz MH.** "An Evaluation of Clinical Outcomes in Patients with Gram-negative Bloodstream Infections According to Carbapenem Minimum Inhibitory Concentration (MIC) Stratification," *Antimicrobial Agents and Chemotherapy*, 68, no. 6 (2013): 1360-3.

**Patel JA, Esterly JS, Scheetz MH, Postelnick MJ.** "An Evaluation of the Accuracy of Physician-entered Indications on Computerized Antimicrobial Orders," *Infection Control and Hospital Epidemiology*, 33 no. 10 (2012): 1066-7.

**Patel JA, Esterly JS, Scheetz MH, Bolon MK, Postelnick MJ.** "Effective Use of a Clinical Decision Support System to Advance Antimicrobial Stewardship," *American Journal of Health-System Pharmacists*, 69, no. 18 (2012): 1543-4.

**Marvanova M, Kripalani S, Roumie CL, Dalal AK, Cawthon C, Businger A, Eden SK, Shintani A, Sponsler KC, Harris LJ, Theobald C, Huang RL, Scheurer D, Hunt S, Jacobson TA, Rask KJ, Vaccarino V, Gandhi TK, Bates DW, Williams MV, Schnipper JL.** "Effect of a Pharmacist Intervention on Clinically Important Medication Errors After Hospital Discharge: a Randomized Trial," *Annals of Internal Medicine*, 157, no. 1 (2012): 1-10.

Rodriguez C, Peterson J, Kripalani S, Danciu L, Harrell D, **Marvanova M, Powers J.** "Surveillance and Pharmacist Intervention for Vulnerable Hospitalized Geriatric Patients on Highrisk Medication Regimens (Abstract) *Journal of Hospital Medicine*, Suppl 2, no. 7 (2012): 209.

**Stec J, Fomovska, A, Afanador GA, Muench, SP, Zhou Y, Lai BS, Bissati KE, Hickman MR, Lee PJ, Leed SE, Auschwitz JM, Sommerville C, Woods S, Roberts CW, Rice D, Prigge ST, McLeod R, Kozikowski AP.** "Modification of Triclosan Scaffold in Search of Improved Inhibitors for Enoyl-Acyl Carrier Protein (ACP) Reductase in *Toxoplasma gondii*," *ChemMedChem*, 8 (2013): 1138–1160. Muench SP, Stec J, Zhou Y, Afanador GA, McPhillie M, Hickman MR, Lee PJ, Leed SE, Auschwitz JM,



Prigge ST, Rice D, McLeod R. "Development of a Triclosan Scaffold which Allows for Adaptations on Both the A- and B-ring for Transport Peptides;" *Bioorganic & Medicinal Chemistry*, 23, (2013): 3551–3555.

## Poster Presentations

**Esterly J**, Patel J, McLaughlin M, Weiss C, Wunderink R, March K, Cooper C, Rachwalski E, Postelnick M. "Impact of Antibiotic Selection on Risk-adjusted Mortality in ICU Patients Requiring Gram-negative Therapy." Poster presented at the American College of Clinical Pharmacy Annual Meeting, Lake Hollywood, Fla., October 2012.

Gilbert E, Gandhi S, **Esterly J**, Dorgan K. "Benefits of Electronic Versus Manual Billing of Anesthesia Gases at an Academic Medical Center." Poster presented at the American Society of Health-System Pharmacists Midyear Clinical Meeting, Las Vegas, Nev., December 2012.

Keppel A, Tai-ho T, Postelnick M, Patel J, **Esterly J**. "Accuracy of Healthcare-associated Pneumonia as the Selected Indication on Physician-entered Antimicrobial Orders." Poster presented at the American Society of Health-System Pharmacists Midyear Clinical Meeting, Las Vegas, Nev., December 2012.

Short E, McLaughlin M, **Esterly J**, Postelnick M. "De-escalation of Broad Spectrum Antibiotics in Enterococcal Bloodstream Infections According to VRE Colonization." Poster presented at the 52nd Interscience Conference on Antimicrobial Agents and Chemotherapy, San Francisco, Calif., September 2012.

## Grants & Awards

Department of Pharmacy Practice faculty members, including **Cindy Arocena, Rebecca Castner, Sabah Hussein, Diana Isaacs, Charisse Johnson, Janene Marshall, Marketa Marvanova, Angela Riley** and **Sneha Srivastava**, collectively received a Million Hearts Team Up, Pressure Down community grant in the amount of \$1,000 from the National Association of Chain Drug Stores Foundation.

**Michael Danquah, PhD**, assistant professor of pharmaceutical sciences, received a Center for Teaching and Research Excellence grant in the amount of \$14,000 to support the research project titled *Nanotherapies for Treating Breast Cancer*.

**Duc Do, PhD**, assistant professor of pharmaceutical sciences, received the American Association for Cancer Research (AACR) Minority-Serving Institution Faculty Scholar in Cancer Research Award in the amount of \$1,800 to participate in the 2013 AACR annual meeting in Washington, DC.

**Abir El-Alfy, PhD**, associate professor of pharmaceutical sciences, received a Center for Teaching and Research Excellence enrichment grant in the amount of \$1,600 to attend and deliver a presentation at the American Chemical Society's 2012 national meeting in Philadelphia.

Chicago State University awarded **Elmer Gentry, PhD**, associate dean of academic affairs, and **Rosalyn Vellurattil, PharmD**, capstone director and associate professor of pharmacy practice, with a 2012 Center for Teaching and Research Excellence grant in the amount of \$12,000 to support the project titled "Capstone Research Day."

**Mohammad Newaz, PhD**, associate professor of pharmaceutical sciences, received a Federation of American Societies for Experimental Biology (FASEB) Minority Access to Research Careers Travel Fellowships to support travel expenses for two of his students who attended the 2013 FASEB meeting in Boston.

**Jozef Stec, PhD**, assistant professor of pharmaceutical sciences, received a Center for Teaching and Research Excellence seed grant in the amount of \$15,000 to support the research project titled *Synthesis of Novel Antitubercular Agents*.

Chicago State University awarded **Tatjana Petrova, PhD**, assistant professor of pharmacy practice, with a 2012 Center for Teaching and Research Excellence research grant in the amount of \$7,500 for the project titled *Identifying Unique Cohorts of Students With Unique Conceptualization of Professionalism*.

## STUDENT NEWS

# CSU-COP Hurdles Language Barriers to Alzheimer's Education

*Student pharmacists deliver patient education course in Mandarin Chinese*

In 2012, the CSU College of Pharmacy partnered with the Alzheimer's Association to expand the organization's presence in Chicagoland's African American communities. And this past spring, second-year student pharmacists Sharon Chiu and Bernice Man extended the association's reach by engaging a new, underserved population: Chinese Americans.

On April 25, Chiu and Man visited Chicago's Chinese American Service League (CASL) Senior Housing Community to discuss dementia, warning signs and dietary influencers that affect the progression of the disease.

Outreach education seminars have become routine for Chiu, Man and the other 22 student pharmacists enrolled in the elective *African-American Community Representatives* geriatric course, taught by Assistant Professor Angela Riley, PharmD. However, the CASL activity special challenges because the audience spoke very little English.

Chiu and Man delivered their presentation in Mandarin, Chinese. Although Mandarin is not their first language, the student pharmacists delivered their presentation in Chinese, fielded questions and even left behind fact sheets that had also been translated into the audience's first language.

"It was awesome. They have a very rich dialogue," Dr. Riley said, admitting that she could not understand the conversation. "It left the students and the participants with a great feeling of accomplishment."



*Dr. Riley is a member of the Alzheimer's Association's Greater Illinois Chapter Board of Directors.*

## STUDENT ACHIEVEMENTS

### January 2012 – June 2013

Third-year student pharmacists **Jaime Brown** and **Abby Dunker** placed first in the February 2013 Spring Symposium and Research Conference in Science, Technology, Engineering and Math poster competition, which took place in Lisle, Ill. The students' poster, titled "Neurotoxic Effects of Acrylamide on Expression of Nr4a2 in the Nervous System of Juvenile Rats," was prepared under the mentorship of **Abir El-Alfy, PhD**, associate professor of pharmaceutical sciences.

Fourth-year student pharmacist **Rainier Celi** placed third in the February 2013 Spring Symposium and Research Conference in Science, Technology, Engineering and Math poster competition, which took place in Lisle, Ill. His poster, titled "Neurotoxic Effects of Acrylamide on Kappa Opioid Receptors in the Nervous System of Juvenile Rats," was prepared under the mentorship of **Abir El-Alfy, PhD**, associate professor of pharmaceutical sciences.

Fourth-year student pharmacist **Chelsey Imel** placed second in the graduate oral presentation competition at the February 2013 Spring Symposium and Research Conference in Science, Technology, Engineering and Math poster competition in Lisle, Ill. Her presentation, titled "Comparison of Parthenolide Levels in Aquaponically vs. Conventionally Grown Tanacetum Parthenium," was prepared in collaboration with **Ehab A. Abourashed, PhD**, associate professor of pharmaceutical sciences, and under the mentorship of **Melany P. Puglisi-Weening, PhD**, associate professor of pharmaceutical sciences.

Fourth-year student pharmacists **Zura Liaqat** and **Aisha Rauf** each received a 2012 Minority Access to Research Career scholarship in the amount of \$3,700 to travel to the American Society for Human Genetics Meeting, which took place in May 2012, in San Francisco.

These grants, awarded by the Federation of American Societies for Experimental Biology/Minority Access to Research Careers Program were secured under the mentorship of **Nadeem Fazal, PhD**, associate professor of pharmaceutical sciences.

Third-year student pharmacist **Albert Nelson** placed second in the graduate poster presentation competition, chemistry category, at the February 2013 Spring Symposium and Research Conference in Science, Technology, Engineering and Math in Lisle, Ill. His presentation, titled "Antibacterial Properties of Extracts of Subtropical Algae Against Potential Bacterial Pathogens," was based on his research prepared in collaboration with Urszula Tanouye, and Brian T. Murphy, of the University of Illinois at Chicago College of Pharmacy, along with CSU student pharmacist **Shanise Wallace** and **Cindy Arocena, PharmD**, clinical assistant professor of pharmacy practice, under the mentorship of **Melany P. Puglisi-Weening, PhD**, associate professor of pharmaceutical sciences.

Third-year student pharmacists **Albert Nelson** and **Shanise Wallace** placed second in the February 2013 Spring Symposium and Research Conference in Science, Technology, Engineering and Math competition in Lisle, Ill. The students' poster, titled "Antibacterial Properties of Extracts of Subtropical Algae Against Potential Bacterial Pathogens," was prepared under the mentorship of **Melany P. Puglisi-Weening, PhD**, associate professor of pharmaceutical sciences.

First-year student pharmacist **Julia Sears** and second-year student pharmacist **Damiete Whyte** placed third in the February 2013 Spring Symposium and Research Conference in Science, Technology, Engineering and Math poster competition in Lisle, Ill. The students' poster, titled "Exploring Marine Natural Products as Sources of Antifungal Compounds Against Known Funga," was prepared under the mentorship of **Melany P. Puglisi-Weening, PhD**, associate professor of pharmaceutical sciences.



Bell pepper (Species: *Capsicum annuum*;  
Family: *Solanaceae*)

RX INSIGHTS: PRACTICAL APPLICATIONS OF CSU-COP RESEARCH

# Bell Peppers

## Can Add Spice to Our Lives

By Jozef Stec, PhD

**B**ell peppers are just one of many varieties of the well-known chili peppers. Their characteristic bell shape with crunchy, thick texture and vivid colors — ranging from green to yellow, orange, red and even purple, brown and black — not to mention their delicate, sweet flavor, make this variety of chili pepper a staple ingredient of almost every cuisine on the globe.

Besides their mild flavor, bell peppers, also known as sweet peppers, have high nutritional value and numerous disease-preventing and health-promoting properties.

### Vitamin Rich

Bell peppers (especially those with red color) are an excellent source of vitamin C, which is known to be essential for various enzymatic reactions, including those of collagen synthesis. They also possess antioxidant properties. Consumption of bell peppers helps protect the human body from scurvy, boosts immunity and scavenges free radicals — harmful and pro-inflammatory agents generated by stress and illness.

This chili's high content of vitamin A contributes to proper immune functions as well as good vision, skin and mucosa health.

Furthermore, bell peppers contain good levels of the essential

B-complex vitamins. The individual vitamins belonging to this group are crucial for the proper functioning of a plethora of biochemical and physiological processes in the human body. For example, vitamin B1 is important to the body's neurological functions. And the synthesis and metabolism of lipids, carbohydrates and proteins are widely understood to be supported by vitamins B2, B3, B5 and B6.

Fresh bell peppers are often recommended for pregnant women due to the beneficial effects of folate (vitamin B9) and vitamin K, which contribute to fetal development and homeostasis of nervous and cardiovascular systems.

### Packed With Minerals

Bell peppers also have adequate levels of essential minerals, including iron, zinc, potassium, and manganese, to name a few. Additionally, their high content of dietary fiber enhances absorption of important nutrients from the gastrointestinal tract.

Research suggests that consumption of sweet peppers contributes to protection against anemia, hypertension, hyperlipoproteinemia, migraine, stress and depression. In light of these health benefits, it's good to know that bell peppers are found in so many kitchens.



**Dr. Jozef Stec** is an assistant professor in the Department of Pharmaceutical Sciences. He teaches organic and medicinal chemistry, and his research includes design and synthesis of biologically-active molecules

CHICAGO STATE UNIVERSITY

College of Pharmacy

9501 S. King Drive

206 Douglass Hall

Chicago, IL 60628-1598

NON-PROFIT ORG.  
U.S. POSTAGE  
PAID  
CHICAGO, IL  
PERMIT NO. 2653

## CSU College of Pharmacy Calendar of Events

**November 6:** National Association of Boards  
of Pharmacy and American Association  
of Colleges of Pharmacy District IV Meeting

**December 19:** Winter Commencement

**January 13:** Spring Classes Begin

**May 2:** Capstone Research Day

**March 10-15:** Spring Break

**May 14:** Pharmacists Oath and Hooding Ceremony

**May 15:** Spring Commencement

