

Upcoming Events

"What is Blended Learning?"
Tuesday Morning Mentor
9/30
10:30-11:30
LIB 318

Art of Teaching 11: Engaging with Discussion, Part I
10/6
10:30-11:30
Online via IRTC

"The Endocannabinoid System: A Potential Therapeutic Target for Mood Disorders"
Faculty Symposium Series with Dr. Abir El-Alfy
10/7
12:00-2:00
LIB 301

[Click here to register for an event.](#)

APPEALING APPS & SITES

Site: [The Visual Communication Guy](#)

Cost: FREE!

This website is your visual communication hub, with lots of resources on color, design principles, tutorials, and teaching aids, as well as book reviews and tips on professional communication.



2015-2016 Research CUEs

In accordance with the 2010-2015 CSU/UPI Contract, Appendix F, up to 51 CUEs will be awarded for faculty research to be conducted during the 2015-2016 academic year. Full-time Unit A faculty who are interested in receiving up to three CUEs should submit proposals for research projects in accordance with contract guidelines.

The 2014-2015 Faculty Research CUE Committee will review the proposals, score each one according to a rubric, and make recommendations to the presi-

dent and the interim provost for approval by November 17, 2014. The president will then make his final decision, and the Committee, deans, and applicants will be notified of approved projects by December 15, 2014.

All research-active faculty are encouraged to apply for the opportunity to receive 3 CUES of release time to conduct their research during the academic year. The deadline for proposals is **October 27, 2014**.

Questions and comments can be directed to Dr. Robert LeSuer at rlesuer@csu.edu or 773-995-2321.



"Authentic Assessment Toolbox" Workshop—11/18

Join the CTRE next month for the next in its series of "Create, Connect, Collaborate" events with:

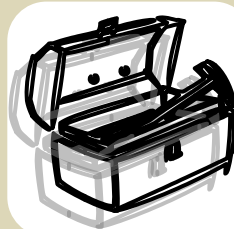
"The Authentic Assessment Toolbox" Workshop
with Dr. Jon Mueller, Professor of Psychology, North Central College

This workshop will discuss:

- what authentic assessment is, and how it differs from traditional assessment
- how to construct good authentic assessments, including

the development of effective rubrics

- how to apply the principles of authentic assessment to the assessment of skill development
- how to use rubrics to guide instruction



This workshop will take place on **Tuesday, November 18 from 10:00 a.m. to 2:00 p.m. in LIB 301**. All are welcome to attend.

RSVP to James Kowalski at jkowalsk@csu.edu or 773-995-2498.

Looking Forward

CTRE Virtual Roundtable

The CTRE's newest faculty development initiative, CTRE Virtual Roundtable, is offered as a convenient, user-friendly means of connecting with colleagues across campus to discuss issues and topics related to teaching.

Upcoming roundtables include:

"Art of Teaching 10: Teaching the Critical Skills"

September 29, 2014

10:30-11:30

"Art of Teaching 11: Engaging with Discussion I"

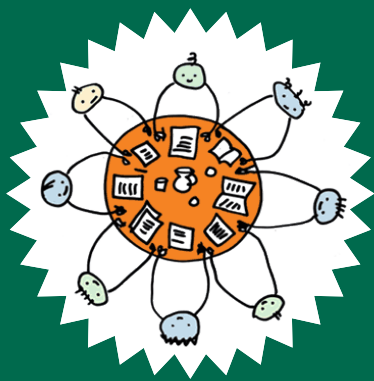
October 6, 2014

10:30-11:30

"Art of Teaching 12: Engaging with Discussion II"

October 13, 2014

10:30-11:30



Each virtual roundtable will take place via Blackboard Collaborate. Links for each session can be found in the Instructors Resource Course in Moodle. To register, contact James Kowalski at jkowalsk@csu.edu or 773-995-2498.

FRN Deadlines

There's still time to apply to some of the Faculty Resource Network's most popular programs!

[Network Winter 2015](#) will focus on the theme, "The City," through three seminars that will explore cities from various scholarly perspectives, and also highlight the use of urban locations as rich learning environments. Applications for Network Winter 2015 are due **Friday, October 3.**

[The University Associates](#) program enables faculty to come to New York University throughout the academic year to use NYU's academic facilities. University Associates can make use of their semester-long tenure by auditing courses, researching in the University libraries, and by participating in open departmental or interdisciplinary colloquia, lectures, symposia and seminars. Applications for UA are due **Friday, October 10.**

If you have questions, visit www.nyu.edu/frn or contact James Kowalski at jkowalsk@csu.edu or 773-995-2498 for more information.



SLATE Conference

Have you signed up for the **12th Annual SLATE Conference** yet? Join over a dozen of your CSU peers in attending one of the best conferences that is dedicated to online teaching and learning excellence.

This conference will help you...

- ...discuss best practices and implementation strategies.
- ...share pedagogical and shared learning approaches.
- ...see how other institutions are using online learning.

SLATE

Supporting
Learning
And
Technology in
Education

- ...network with other users of online learning technologies.

A Moodle Special Interest Group (SIG) will also be offered for attendees who use this LMS.

The SLATE Conference will take place **October 22-24 at Northern Illinois University's Naperville Campus.** [Standard registration](#) is now open through October 18 (\$175/single or \$150/group of three or more).