

Upcoming Events

Syllabus and LIS
E-Resources Workshop
with Prof. Joanna
Kolendo and James
Kowalski

11/13
10:30-12:30
LIB 301

“Biodiversity in
Deforested Landscapes:
Patterns, Scale, and
Modeling of the
Atlantic Forest of
South America” Faculty
Symposium Series with
Dr. Noé de la Sancha

11/14
12:00-2:00
LIB 301

Online Certification
Training Begins
James Kowalski, Instr.

11/17
8 Weeks
Online via
Moodle

“Authentic Assessment
Toolbox” Workshop
with Dr. Jonathan
Mueller

11/18
10:00-2:00
LIB 301

Fulbright Scholar Pro-
gram Faculty Workshop
with Mr. Andrew Riess,
Council for Internation-
al Exchange of Scholars

11/24
10:00-12:30
LIB 301

[Click here to register for an event.](#)

Faculty Symposium Series—Thursday 11/13

Join the CTRE this Thursday for the
next Faculty Symposium Series
presentation:

**“Biodiversity in Deforested
Landscapes: Patterns, Scale, and
Modeling of the Atlantic Forest of
South America”**
with **Dr. Noé de la Sancha**
Department of Biology

This presentation will explore shift-
ing trends in forest life from north-
eastern Brazil to eastern Paraguay,
based in part on the research that
was conducted for the recently pub-
lished paper, “Metacommunity



Structure in a Highly Fragmented For-
est: Has Deforestation in the Atlantic
Forest Altered Biogeographic Pat-
terns?” in *Diversity and Distributions*.

This presentation will take place on
**Thursday, November 13, 2014 from
12:00 to 2:00 p.m. in LIB 301.**

[Click here to register](#) for this event.

Syllabus & LIS E-Resources Workshop

This Friday, LIS and the CTRE are
teaming up to bring you a syllabus
and e-resources workshop.

The first half will focus on the basics
of creating an effective syllabus, in-
cluding how to articulate effective
learning objectives and align them
with assess-
ments, and the
second hour will
explore the LIS
electronic re-
sources that are
available to you,
and how to in-
clude them in

your syllabus. This workshop will be
co-facilitated by Prof. Joanna Kolen-
do, Reference and Electronic Re-
sources Librarian at CSU, and James
Kowalski.

This workshop will take place on **Fri-
day, November 14 from 10:30 to
12:30 in LIB 301.**

[Click here](#) to regis-
ter for this work-
shop. If you have
questions, please
contact James Kow-
alski at [jkow-
alsk@csu.edu](mailto:jkow-
alsk@csu.edu) or 773
-995-2498.



Looking Forward

CTRE Virtual Roundtable

The CTRE's newest faculty development initiative, CTRE Virtual Roundtable, is offered as a convenient, user-friendly means of connecting with colleagues across campus to discuss issues and topics related to teaching.

Upcoming roundtables include:

"Art of Teaching 15: Coaching Students on Presentation Skills"

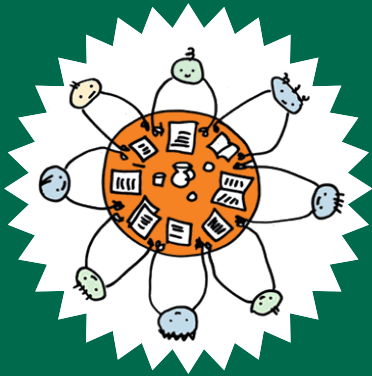
November 10, 2014
10:30-11:30

"Art of Teaching 16: One-on-One Teaching"

November 17, 2014
10:30-11:30

"Art of Teaching 17: The Learner's Perspective"

December 1, 2014
10:30-11:30



Each virtual roundtable will take place via Blackboard Collaborate. Links for each session can be found in the Instructors Resource Course in Moodle. To register, contact James Kowalski at jkowalsk@csu.edu or 773-995-2498.

Authentic Assessment Workshop

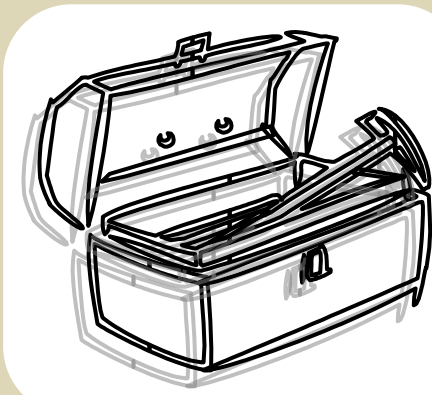
Join the CTRE on November 18 for the next in its series of "Create, Connect, Collaborate" events with:

"The Authentic Assessment Toolbox" Workshop

with Dr. Jon Mueller, Professor of Psychology, North Central College

This workshop will discuss:

- what authentic assessment is, and how it differs from traditional assessment
- how to construct good authentic assessments, includ-



- ing the development of effective rubrics
- how to apply the principles of authentic assessment to the assessment of skill development
- how to use rubrics to guide instruction

This workshop will take place on **Tuesday, November 18 from 10:00 a.m. to 2:00 p.m. in LIB 301**. All are welcome to attend. RSVP to James Kowalski at jkowalsk@csu.edu or 773-995-2498.

Fulbright Scholar Program

On November 24, there will be a faculty workshop on the [Fulbright Scholar Program](#).



Andy Riess, Assistant Director of Outreach at the Council for International Exchange of Scholars (CIES), will provide information about the Fulbright Scholar Program and offer advice on the application process.

There will also be a panel Q&A by CSU's Katey Assem, Judy Birgen, Aref Hervani, and David Kanis, who will comment on their experiences as participants and reviewers in the Fulbright Scholar Program.

The Fulbright Scholar Program, sponsored by the U.S. Department of State, currently awards over 8,000 grants annually, including 1,200 for U.S. scholars.

This workshop will take place on **Monday, November 24 from 10:00 a.m. to 12:30 p.m. in LIB 301**. Light refreshments will be served, courtesy of the Office of the Provost.

All interested faculty are encouraged to attend this free workshop—[click here to register](#).

If you have questions, contact James Kowalski at jkowalsk@csu.edu or 773-995-2498.