

Upcoming Events

CTRE Virtual
Roundtable:
Discover Wikis! 4/28
10:30-11:30
[Online via IRTC](#)

“How Can I Assign
Groups More Effec-
tively?” 4/29
10:30-11:30
LIB 318
Tuesday Morning
Mentor

Chicago Area
Faculty
Development
Network
Spring Event 5/2
Chicago School
of Professional
Psychology
9:00-12:00
([Click for info](#))

[Click here to register for an event.](#)

{ APPEALING APPS & SITES }

Site: [Jason Rhode, Ph.D. Blog](#)

Price: FREE!

Ranked as
#14 on the

jason rhode

“Top e-Learning Blogs” list, Dr. Rhode is a passionate and experienced online instructor, instructional designer, and course designer at Northern Illinois University.

CTRE Theme for 2014-2015

Every year, the CTRE utilizes a theme to help guide its programming for workshops, special events, and information and training sessions. In 2012-2013 it was “Building the Learning Community,” which focused on creating and deepening coordinated efforts across campus. In 2013-2014, the theme was “Writing for Success,” providing opportunities to explore scholarly writing and how writing is taught, both in the online and face-to-face classroom.



The CTRE theme for the 2014-2015 academic year has been announced:

“Create, Connect, Collaborate”

This theme will focus on not just building connections between departments across campus, but discovering new ways that ideas, resources, and expertise can be shared to realize goals that previously seemed unworkable.

Watch for upcoming events in the new academic year!

CTRE Faculty Seminar Series

In keeping with its upcoming programming theme, the CTRE is pleased to announce a new running program for the 2014-2015 academic year:

CTRE Faculty Seminar Series



This series is an opportunity for faculty from across campus to share their scholarly work to an audience of their university peers and colleagues. All topics and formats are welcome.

Seminars will take place throughout the academic year, starting in the summer of 2014.

If you are interested in being a presenter, please fill out [this brief information form](#). You will be contacted shortly thereafter.

If you have questions about the CTRE Faculty Seminar Series, please contact James Kowalski at jkowalsk@csu.edu or 773-995-2498.

Looking Forward

CTRE Virtual Roundtable

The CTRE's newest faculty development initiative, CTRE Virtual Roundtable, is offered as a convenient, user-friendly means of connecting with colleagues across campus to discuss issues and topics related to teaching.

Upcoming roundtables include:

"Discover Wikis!"

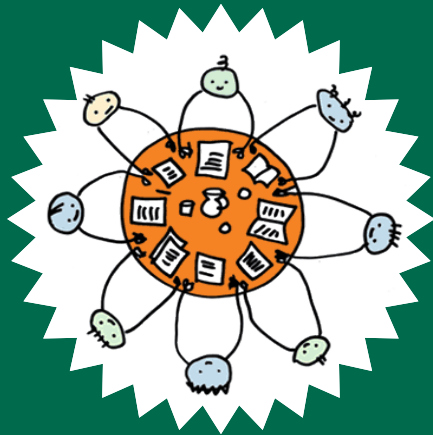
April 28, 2014
10:30-11:30

"Needs Assessment for CSU Faculty"

May 5, 2014
10:30-11:30

"Be a PowerPoint Power User"

May 12, 2014
10:30-11:30



Each virtual roundtable will take place via Blackboard Collaborate. Links for each session can be found in the Instructors Resource Course in Moodle.

To register, contact James Kowalski at jkowalsk@csu.edu or 773-995-2498.

CTRE Grant Applications Due 7/1

If you are planning to submit a CTRE Grant application for the July 1 deadline but will be off-campus during the summer, be sure to complete all the necessary paperwork before you go!

You can find information and downloadable application forms on the [CTRE website's grants page](#).



Flipped Learning Workshop—5/3

There is still time to register to attend the one-day Flipped Learning Workshop this Saturday, May 3, 2014, hosted by [Illinois Computing Educators \(ICE\)](#) and the [Flipped Learning Network™](#).

This exciting professional learning event will be held at:

**Warren Township High School
Almond Campus
34090 Almond Rd
Gurnee, IL 60031**

[Click here](#) to view the agenda and register.

New to this workshop - New to Flipped Learning, Beyond Flipped Learning & Administrator Strands -

flipped learning
network



there is something for everyone at all levels including higher education.

These are highly-participatory events; not the traditional "sit-and-get" seminar. Come ready to dive into the discussions about flipped learning, help create the afternoon agenda, and share your success stories and lessons learned. Prior experience in flipping your class is not required, but a willingness to be open to increased job satisfaction, increased stu-

dent learning, and some classroom energy is mandatory! Bring your wireless device to fully participate in workshop.

The fee is \$149 for ICE members and \$179 for non-members (includes one year of ICE membership). Lunch will be provided.

(If the hyperlinks above do not work, visit <http://flippedlearning.org> and click on "Events".)