

Upcoming Events

Online
Certification
Training (OCT)
Begins

6/30
8 Weeks
Online
[Click here to register](#)

“How Can I
Create Meaning-
ful Assignments
for My Students?”

7/1
10:30-11:30
LIB 318

CTRE Grant
Applications Due

7/1
By 5:00 p.m.
In-person to LIB 318
or as PDF to
ctre@csu.edu

[Click here to register for an event.](#)

APPEALING APPS & SITES

App: Book Writer
Cost: \$4.99



Book Writer allows you or your students to create rich digital books, to which you can add multimedia elements such as pictures, music, voice recordings, and even videos. Books can be shared easily via Dropbox or Google Drive.

Grant Applications Due Tuesday

The next round of CTRE grant applications will be due by 5:00 p.m. on Tuesday, July 1.

The CTRE grants program exists to enable faculty to take on a variety of endeavors, including conference participation, research projects, equipment purchases, student engagement, and more.

If you would like to learn more about the CTRE grants program, visit www.csu.edu/ctre/grants. There you will find information and application forms for each grant category, as well as scoring rubrics that are used to evaluate each applica-

tion. Grant applications can be scanned and submitted electronically in PDF form to ctre@csu.edu, or can be delivered in paper form to the CTRE in Library Room 318.



OCT Begins Today

The next section of Online Certification Training (OCT) begins today, June 30.

OCT is an eight-week online course designed to help prepare faculty to teach in an online setting. The following units are covered:

- What is Online Teaching?
- Best Practices
- Copyright and Fair Use
- ADA Web Accessibility
- Instructional Design Basics
- Building Course Content

Those who enroll in OCT can expect to spend approximately 3-5 hours per week with readings and assign-



ments, which will include quizzes, discussion forums, and projects. All work must be successfully completed in order to pass OCT.

For the final project, participants will be required to complete two modules of content of an online course.

Rochelle Johnson will facilitate the section starting today. If you have any questions, call 773-995-2960.

[Click here](#) if you would like to register for the June 30 section of OCT.

Looking Forward

CTRE Virtual Roundtable

The CTRE's newest faculty development initiative, CTRE Virtual Roundtable, is offered as a convenient, user-friendly means of connecting with colleagues across campus to discuss issues and topics related to teaching.

Upcoming roundtables include:

"Assessing Students with E-Portfolios"

June 30, 2014

10:30-11:30

"Art of Teaching: Successful Teaching"

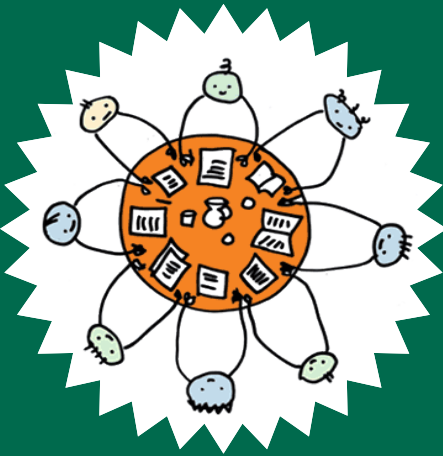
July 14, 2014

10:30-11:30

"Art of Teaching:
Broad Range of Learners"

July 21, 2014

10:30-11:30



Each virtual roundtable will take place via Blackboard Collaborate. Links for each session can be found in the Instructors Resource Course in Moodle. To register, contact James Kowalski at jkowalsk@csu.edu or 773-995-2498.

CTRE Faculty Symposium Series

As part of its 2014-2015 programming theme, the CTRE is pleased to announce :

If you have questions about the CTRE Faculty Symposium Series, please contact James Kowalski at jkowalsk@csu.edu or 773-995-2498.

CTRE Faculty Symposium Series

This series is an opportunity for faculty from across campus to share their scholarly work to an audience of their university peers and colleagues. All disciplines, topics and formats are welcome.

Symposia will take place throughout the academic year, starting in the summer of 2014.

If you are interested in being a presenter, please fill out [this brief information form](#). You will be contacted shortly thereafter.



Respondus LockDown Browser & Monitor

Chicago State University now has an institutional license to use Respondus LockDown Browser and Respondus Monitor. Both of these applications allow for greater security in internet test-taking.

LockDown Browser is a custom internet browser that students must download before taking an exam in Moodle. When it is engaged, students cannot access other webpages, copy and paste, screen capture, or right-click on anything.



Respondus Monitor captures a live video stream of students via a webcam while they are taking an exam. You can then review the video afterwards.

If you are interested in implementing one or both of these applications in your own courses, you can learn more about them on the [Instructors Resource Course in Moodle](#).

If you have further questions, contact the CTRE at 773-995-2960 or elarning@csu.edu.