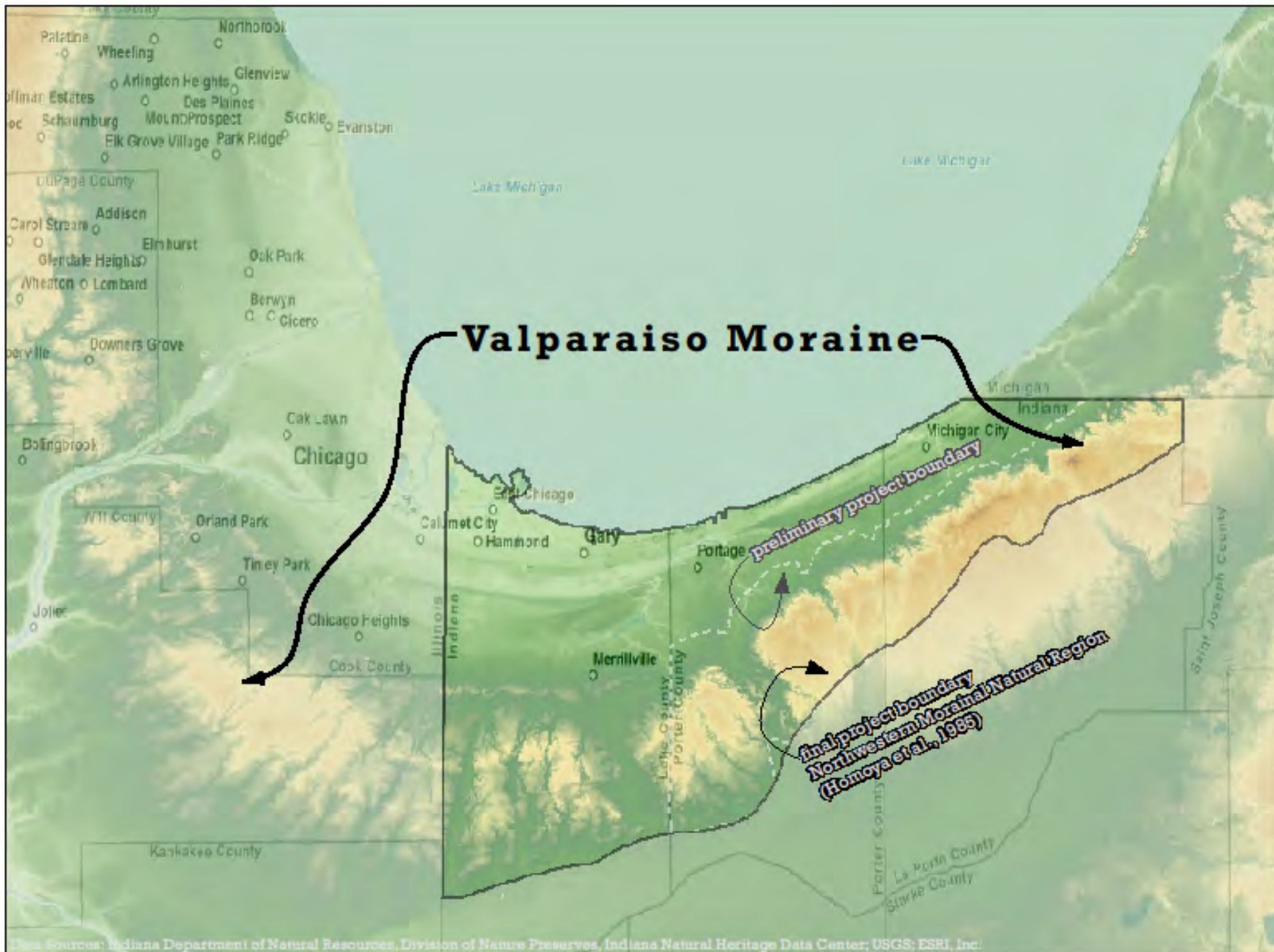




# **Shirley Heinze Land Trust**

**2010 Midwest Land Conservation Conference  
Strategic Conservation Planning  
April 16, 2010**



Data Sources: Indiana Department of Natural Resources, Division of Nature Preserves, Indiana Natural Heritage Data Center; USGS; ESRI, Inc.







LaPorte County -  
Ambler Flatwoods Nature Preserve



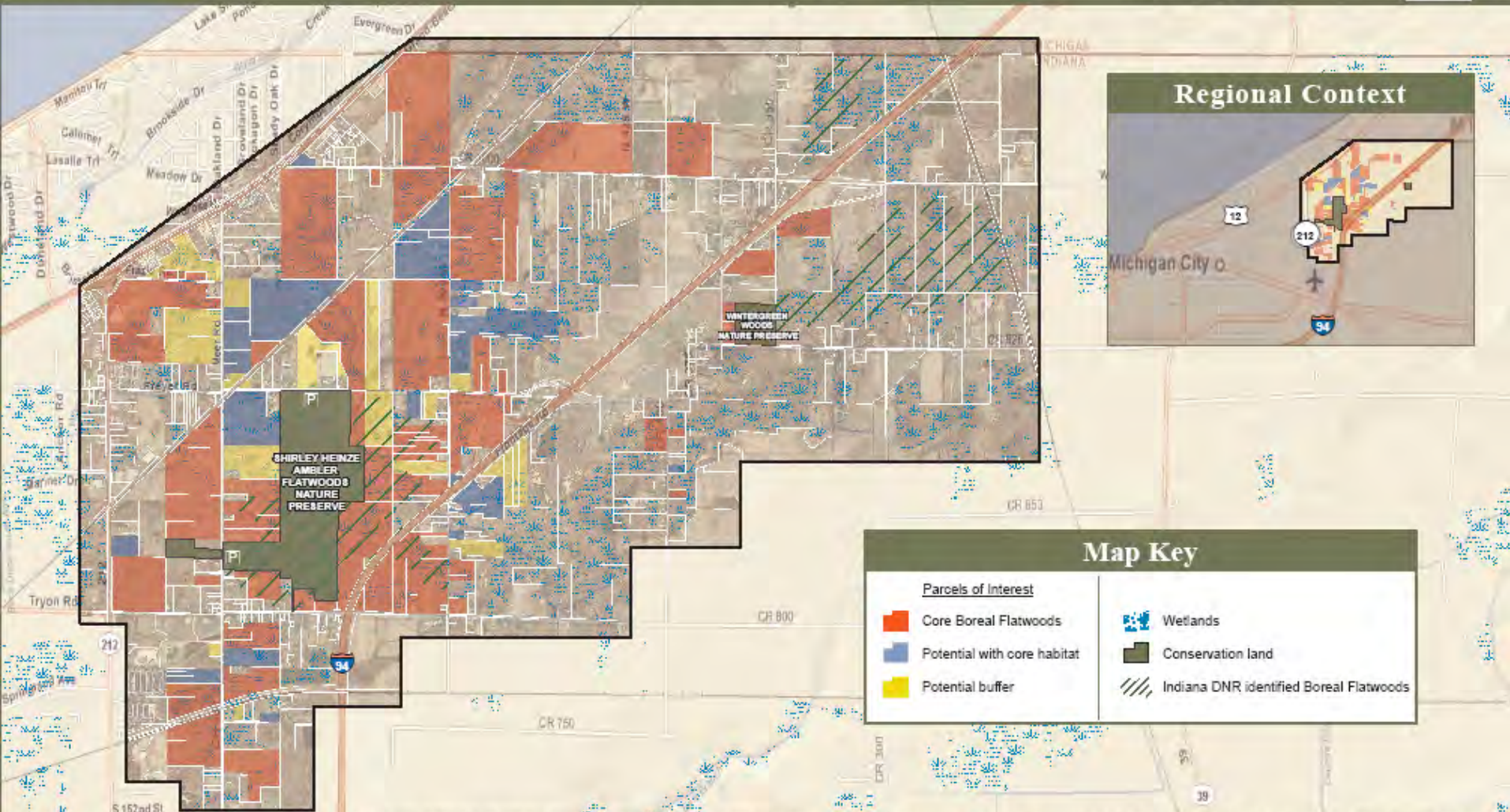


# BROCHURE

## Boreal Flatwoods Conservation Planning Project

0 0.25 0.5 1 Mile

Scale for full page map is 1:31000



| Map Key                     |   |
|-----------------------------|---|
| <u>Parcels of Interest</u>  |   |
| Core Boreal Flatwoods       | Wetlands                                |
| Potential with core habitat | Conservation land                       |
| Potential buffer            | Indiana DNR identified Boreal Flatwoods |

This map is for general planning purposes only. Data displayed herein is age and spatial accuracy 2009. Parcel data courtesy of LaPorte County GIS; 2008 Indiana Statewide Orthorectified Aerial Photography; 2001 Wetland data from AGID wetland study; US Army Corp of Engineers; 2004 Conservation lands from Indiana DNR managed lands database; 2003 Boreal Flatwoods from Indiana Natural Heritage Data Center. Scaleable base map from ESRI Inc's Vector street map layer; ArcGIS Online Services. The street map was developed by ESRI using Tele Atlas Dynamap® and Multimap™ street data for North America.



# Moraine Forest Conservation Planning

## Partners

Shirley Heinze Land Trust

Save the Dunes

LaPorte County  
Conservation Trust

Woodland Savanna Land  
Conservancy

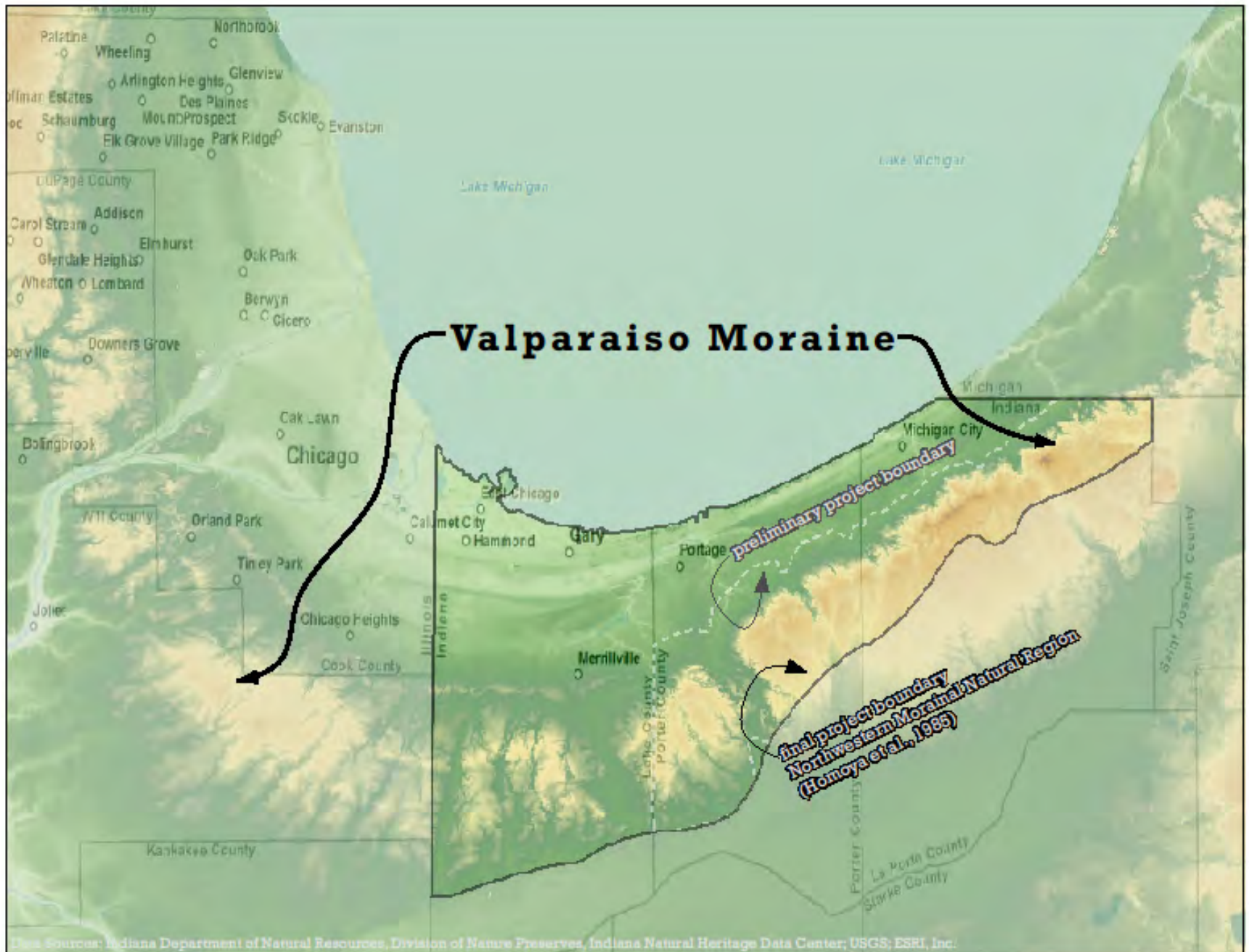
## Funders

Land Trust Alliance

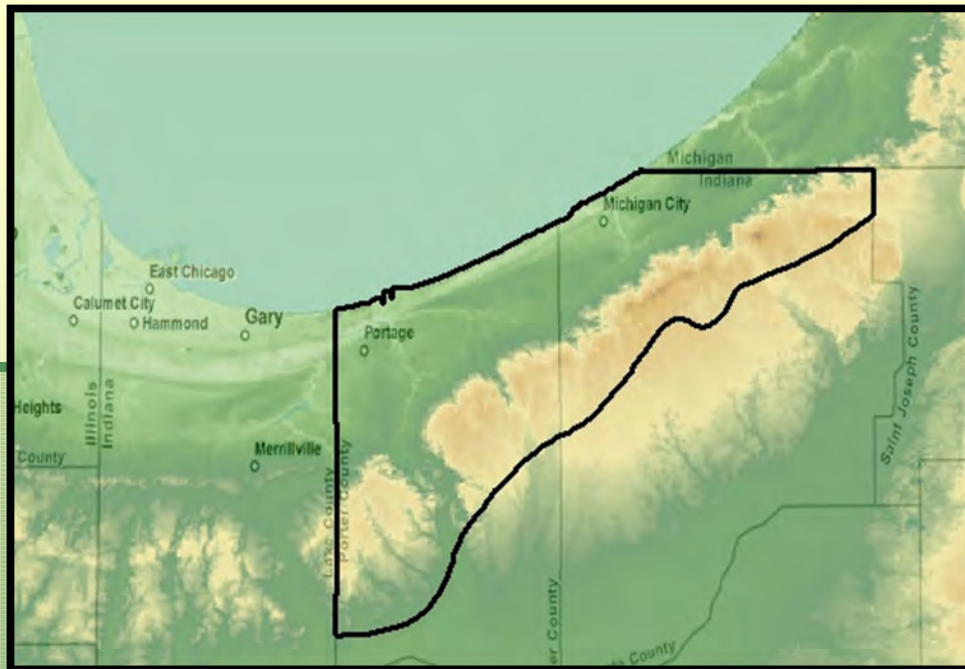
Gaylord Dorothy &  
Donnelley Foundation

Indiana Lake Michigan  
Coastal Program





Data Sources: Indiana Department of Natural Resources, Division of Nature Preserves, Indiana Natural Heritage Data Center; USGS; ESRI, Inc.



#### Parcels

- 2009 (May) LaPorte County Parcels (Laporte Co.)
- 2009 (May) Porter County Parcels (Porter Co.)
- 2009 (May) Managed Lands (IDNR)
- 2009 (October) Lake County Parcels (Lake County Surveyor)

#### Land Cover

- 2005 Forest Outside Managed Lands (Openlands)

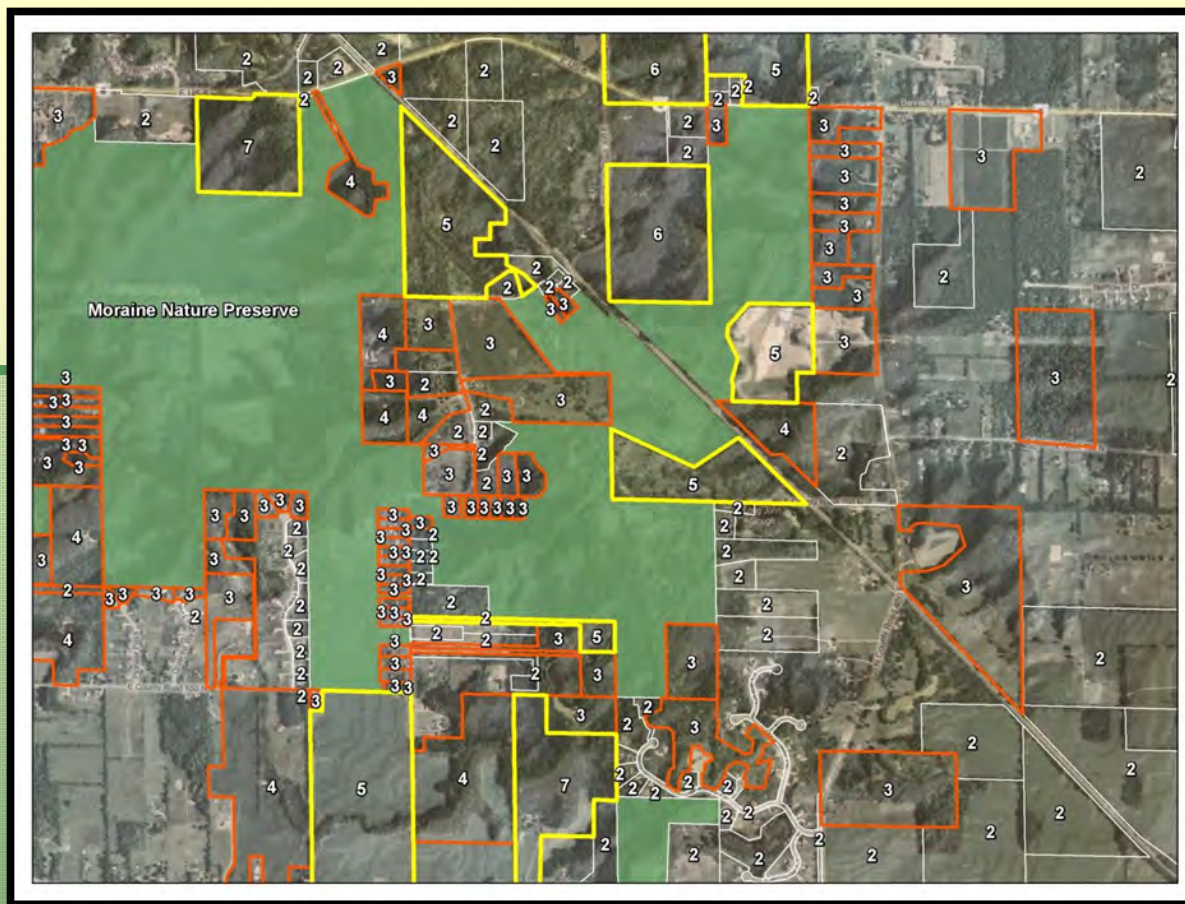
#### Aerial Photography

- 2005 Indiana orthophotography (IN Geographic Information Council)
- post 2005 imagery (Microsoft Virtual Earth)

#### Misc

- Priority conservation sites (IDNR)
- Classified Forest and Wildlands tracts (IDNR)
- Forest Legacy Areas (IDNR)
- 2007 National Wetland Inventory Update (Ducks Unlimited)
- Northwest Indiana Blueways Opportunities (Openlands)

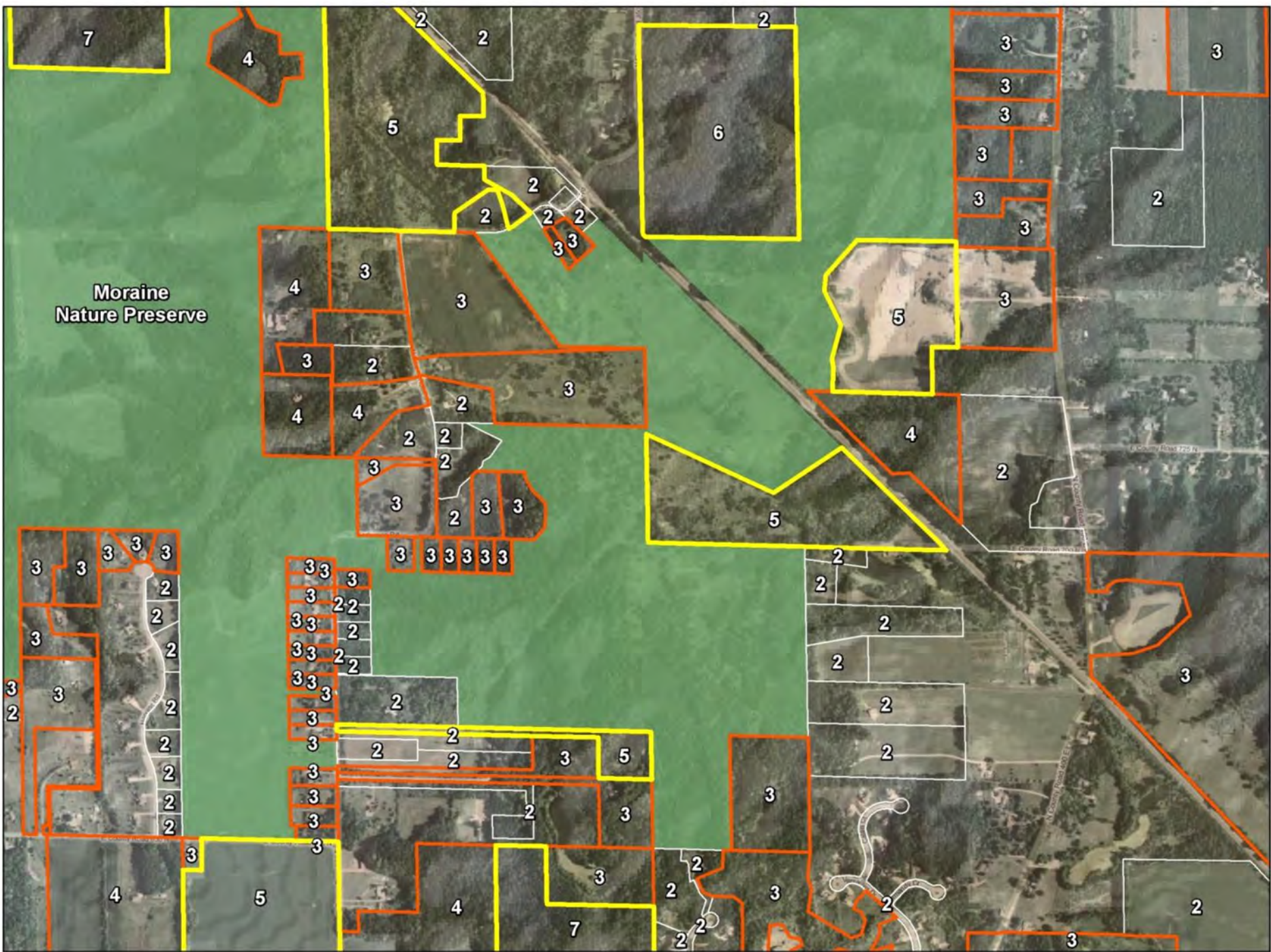




Prioritization was based on the following scoring matrix and classified with the Jenks/Natural Breaks algorithm using ArcGIS Desktop 9.3.1 software.

| Variable   | Weight |
|--|--------|
| Parcels greater than 25 acres in size  | 2      |
| Parcels adjacent to existing managed conservation lands                              | 2      |
| Parcels overlapping forested areas buffered inwardly 100, 200, & 300 meters          | 1-3    |
| Parcels overlapping with Indiana DNR priority conservation sites                     | 1      |
| Parcels participating in Classified Forest & Wildlands or Forest Legacy programs     | 1      |
| Parcels with forest overlapping wetlands   | 1      |
| Parcels with forest overlapping 100 meter buffer of designated blueway opportunities | 1      |





Moraine  
Nature Preserve

7

4

5

2

6

3

3

2

5

3

4

3

3

3

2

3

4

4

2

2

2

3

2

3

3

3

2

3

3

3

3

3

3

3

3

3

2

2

2

3

3

2

2

2

3

3

2

2

2

3

3

2

2

2

3

2

2

2

2

3

2

2

2

2

3

2

2

2

2

3

2

2

2

2

3

2

2

2

2

4

5

4

7

7

2

2

3

3

2

2

3

2

2

2

2

2

2

2

2

2

2

2

2

3

2

3

County Road 272 W

County Road 265 E





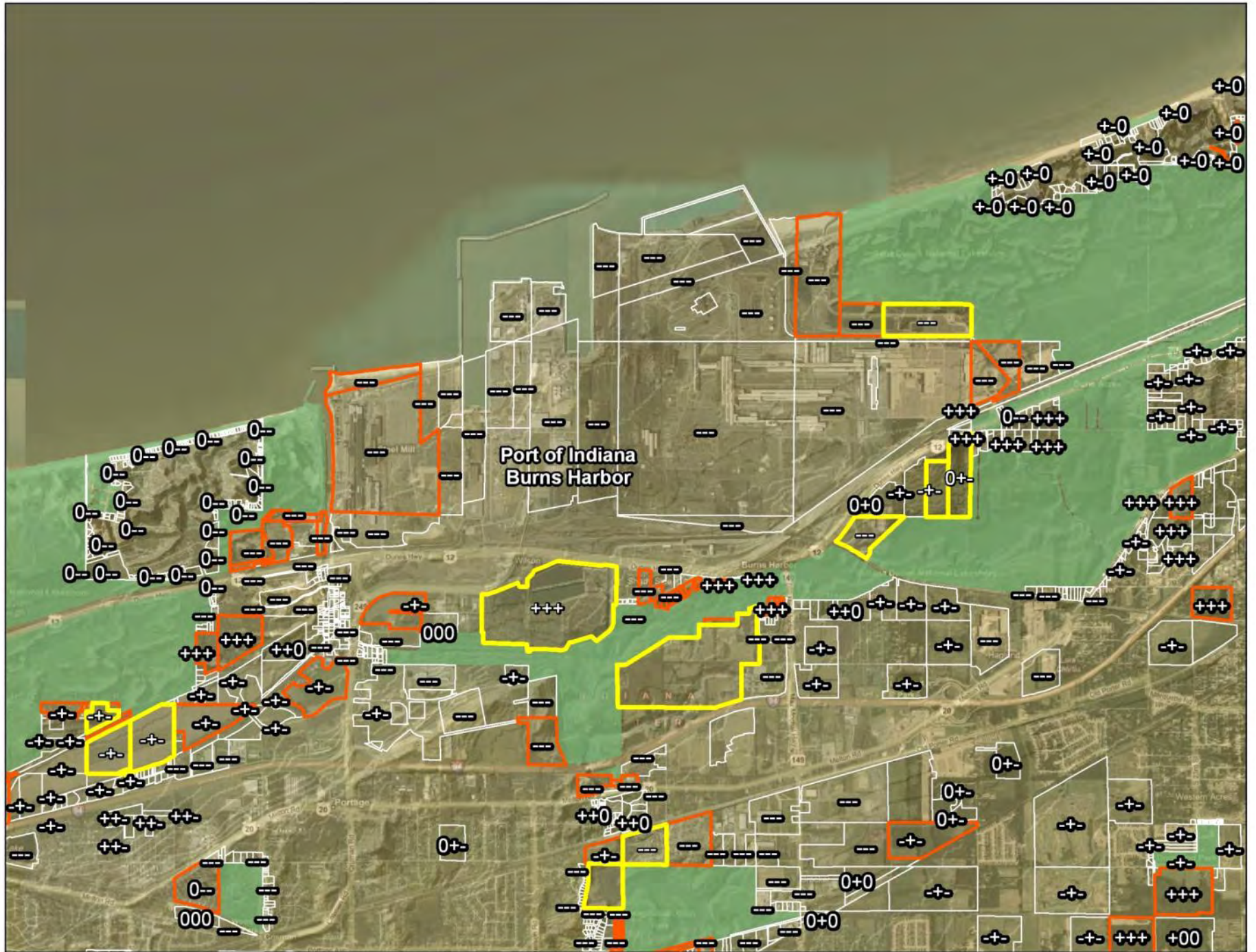








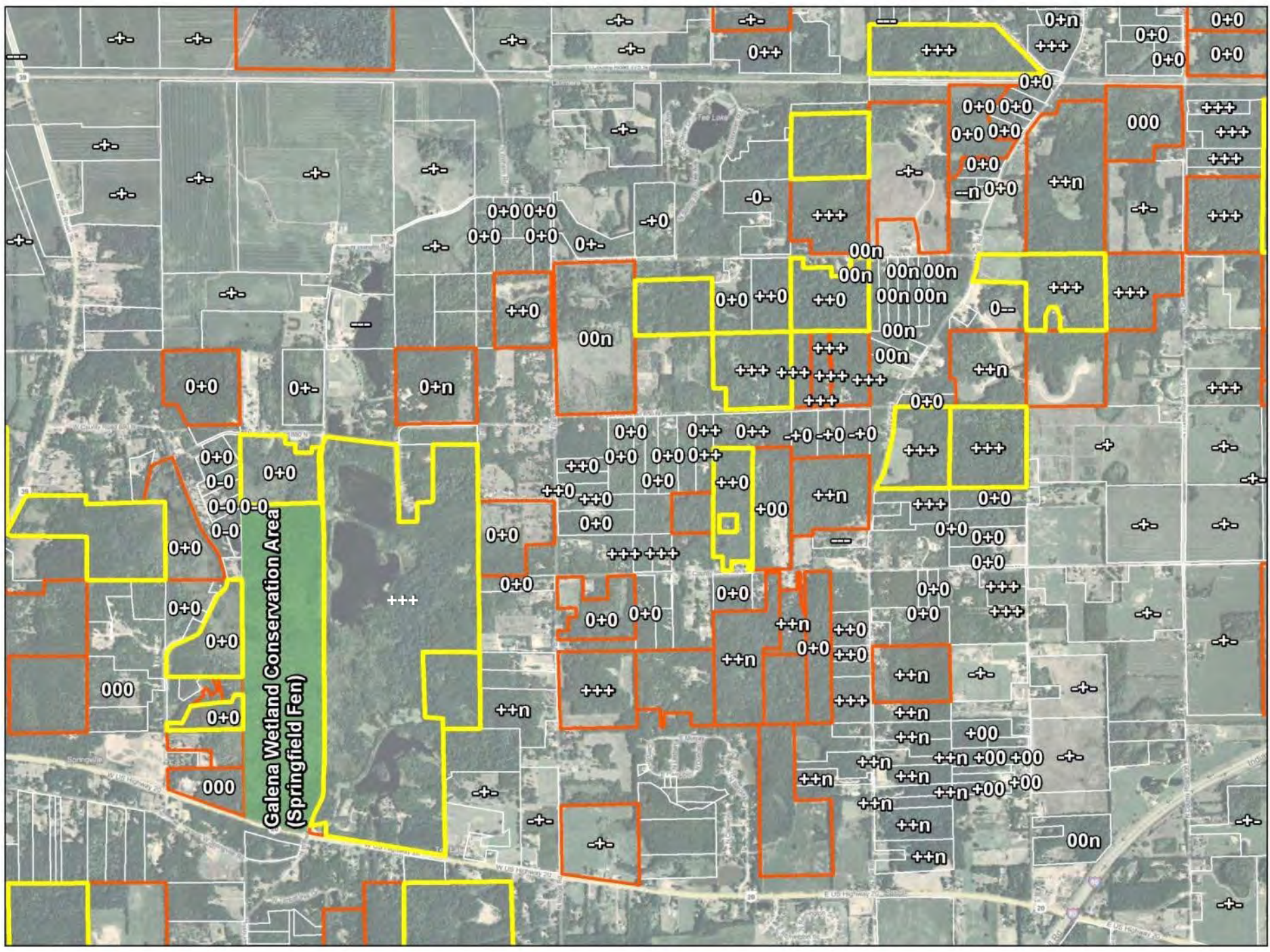










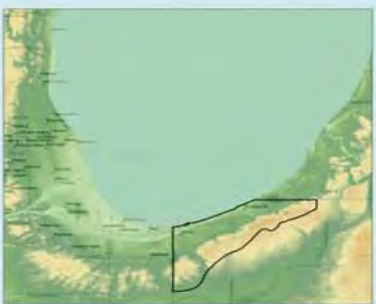




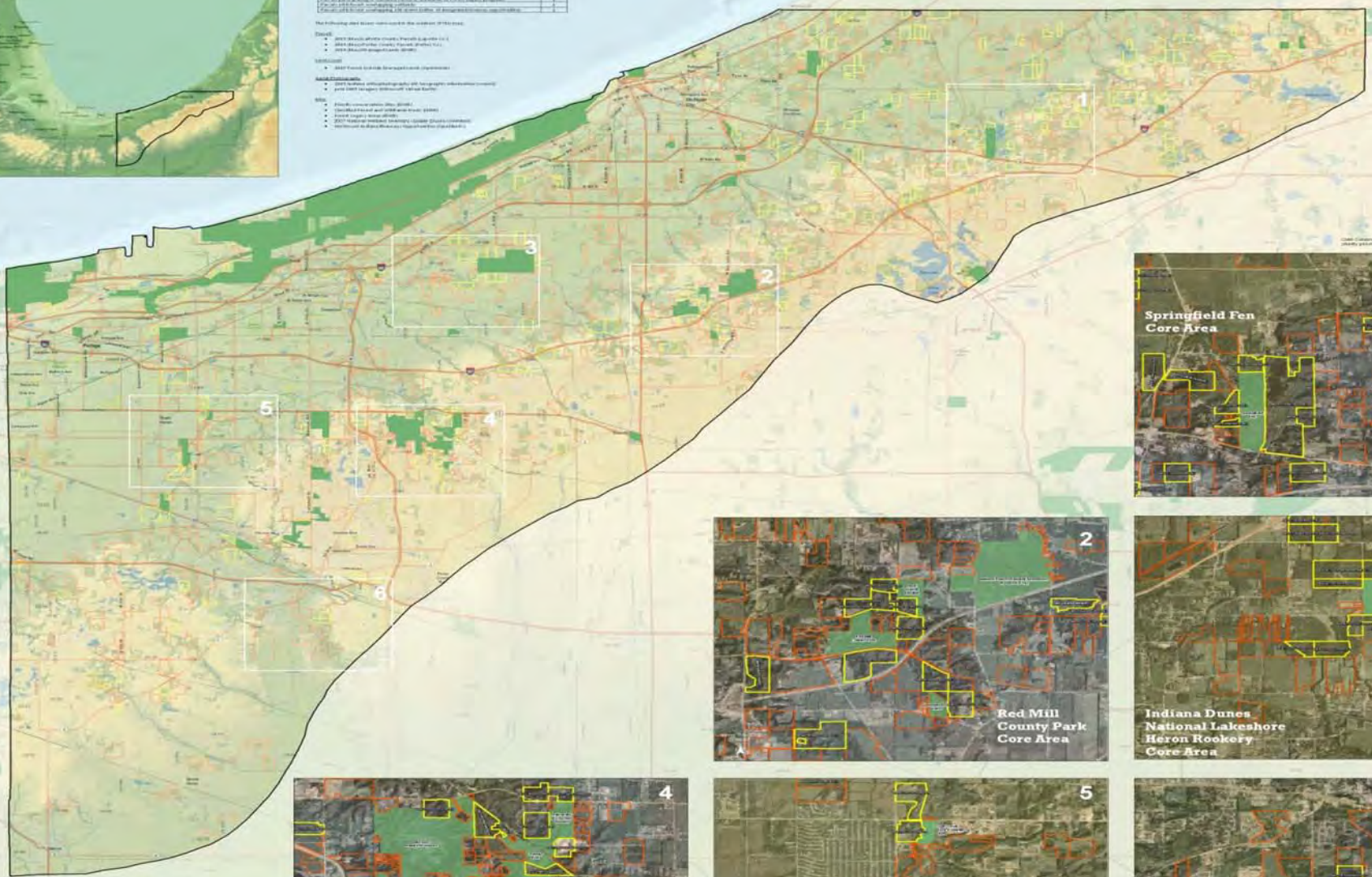
# Northwestern Morainal Region of Porter & LaPorte Counties, Indiana

## Priority Parcels with Conservation Opportunities

This map represents work of the Moraine Forest Conservation Parcel Identification Project. Project supporters include the Indiana Lake Michigan Coastal Program, The Gaylord & Dorothy Durnsley Foundation, Land Trust Alliance, Dickey Henne Land Trust, Save the Dunes Conservation Fund, and LaPorte County Conservation Trust.

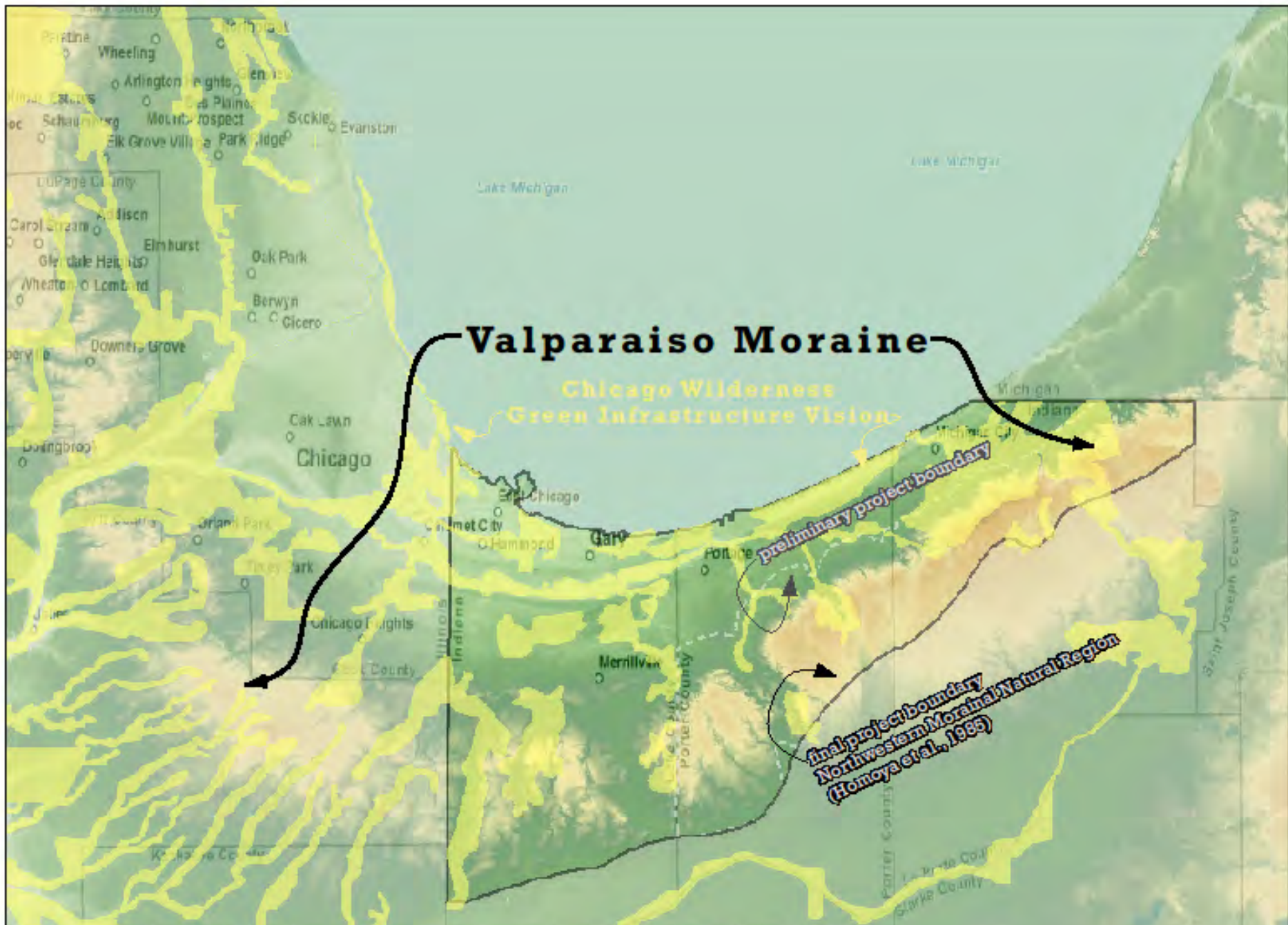


- Legend**
- Priority parcels with conservation opportunities
  - Other parcels with conservation opportunities
  - Other parcels
  - Water
  - Highway
  - Railroad
  - City boundary
  - County boundary
- Parcel Identification**
- | Parcel ID | Parcel Name  | Parcel Size (Acres) | Parcel Type |
|-----------|--|---------------------|-------------|
| 1         | Springfield Fen Core Area                                | 1,200               | Wetland     |
| 2         | Red Mill County Park Core Area                           | 1,500               | Parkland    |
| 3         | Indiana Dunes National Lakeshore Heron Rookery Core Area | 2,000               | Wetland     |
| 4         | Moraine Nature Preserve Core Area                        | 1,800               | Wetland     |
| 5         | Salt Creek Fish & Wildlife Core Area                     | 2,500               | Wetland     |
| 6         | Salt Creek Headwaters Core Area                          | 3,000               | Wetland     |
- Map Symbols**
- Priority parcels with conservation opportunities
  - Other parcels with conservation opportunities
  - Other parcels
  - Water
  - Highway
  - Railroad
  - City boundary
  - County boundary



Project supported by the Indiana Department of Natural Resources, Indiana Department of Environmental Management, and the Indiana Lake Michigan Coastal Program. The Indiana Department of Natural Resources, Indiana Department of Environmental Management, and the Indiana Lake Michigan Coastal Program are not responsible for the accuracy of the information presented on this map.





Map provided by Indiana Department of Natural Resources, Division of Nature Preserves, Indiana Natural Heritage Data Center; USGS; ESRI, Inc. Southeastern Illinois Planning Commission's, 2004 Map of Chicago Wilderness' Green Infrastructure Vision for Illinois, Indiana, Michigan and Wisconsin. GIS Shapefile, Version 1.0. Published July 2004.